

Alexander Technological Educational Institution of Thessaloniki



Undergraduate Studies Bulletin

ΠΡΟΠΤΥΧΙΑΚΑ ΠΡΟΓΡΑΜΜΑΤΑ ΣΠΟΥΔΩΝ ΤΟΥ ΑΤΕΙ ΘΕΣΣΑΛΟΝΙΚΗΣ

ΕΠΕΑΕΚ Μέτρο 2.2 Ενέργεια 2.2.2 Κατηγορία Πράξεων 2.2.2.α

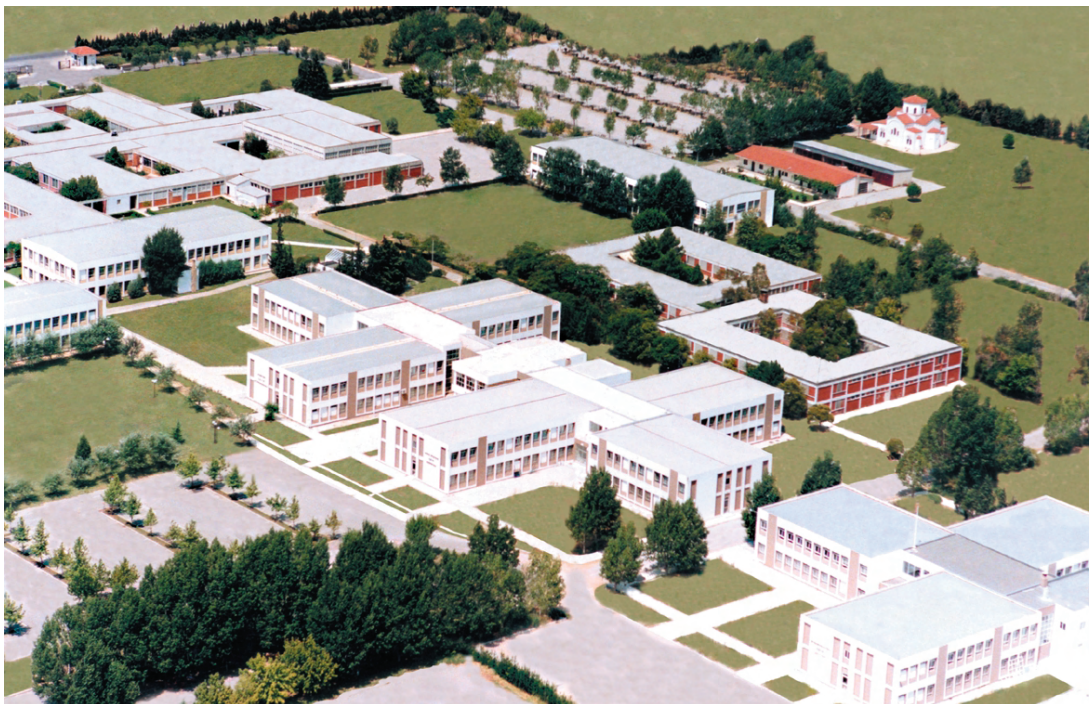


ΥΠΟΥΡΓΕΙΟ ΕΘΝΙΚΗΣ ΠΑΙΔΕΙΑΣ ΚΑΙ ΘΡΗΣΚΕΥΜΑΤΩΝ
ΕΙΔΙΚΗ ΥΠΗΡΕΣΙΑ ΔΙΑΧΕΙΡΙΣΗΣ ΕΠΕΑΕΚ

ΕΥΡΩΠΑΪΚΗ ΕΝΩΣΗ
ΣΥΓΧΡΗΜΑΤΟΔΟΤΗΣΗ
ΕΥΡΩΠΑΪΚΟ ΚΟΙΝΩΝΙΚΟ ΤΑΜΕΙΟ



Η ΠΑΙΔΕΙΑ ΣΤΗΝ ΚΟΡΥΦΗ
Επιχειρησιακό Πρόγραμμα
Εκπαίδευσης και Αρχικής
Επαγγελματικής Κατάρτισης



TECHNOLOGICAL EDUCATIONAL INSTITUTE OF THESSALONIKI

Address: Sindos, 54101 Thessaloniki

Tel: +30 2310791100-111-001

Fax: +30 2310799152

E-mail: simb-tei@admin.teithe.gr

Thessaloniki, past and present

The city of Thessaloniki, where the Technological Educational Institute is located, is a cosmopolitan metropolis where ancient and modern Greek history and culture meet with Europe and Asia. The city was founded in 316 B.C. by Kassandros, the king of Macedonia and was named Thessaloniki, in honour of his wife who was the daughter of Philip II and a half sister of Alexander the Great.

The city used to be a trading meeting point of the east and the west for centuries. During the 2300 years of continuous existence, Thessaloniki gained economic, strategic and administrative importance.

In its long history, Thessaloniki was invaded and conquered by numerous enemies and various nationalities that left traces of their civilization and their culture in the city. Byzantine churches, Roman buildings, Moslem monuments, Walls, archaeological material from different historical periods still exist and bring back memories from a variety of cultures and languages.

The visitor today can visit:

- The White Tower, the symbol of the city, Museum of the city's History and Art today, built as a defense work in the 16th century.
- Numerous Byzantine churches all over the historical center of the city.
- The Archaeological Museum of Thessaloniki where the important finds from the Royal Tombs of Vergina are on display together with artifacts from Archaic to Roman Times.
- The Museum of Byzantine Culture, the Folklife and Ethnological Museum of Macedonia and Thrace, The Museum of Modern Art.

Two big and important universities function in the city:

- The Aristotle University of Thessaloniki, the largest and second oldest university of Greece, founded in 1925.
- The University of Macedonia, Economic and Social Sciences, a "younger" university, founded in 1990.

Thessaloniki is a modern and interesting city with a multicultural character. The numerous festivals, conferences, theatres and other events throughout the year together with the various performances at the recently completed Hall of Music, contribute much to the city's rich cultural life. But, apart from the cultural life, the city's commercial and economic development which is enriched every year by the annual Trade Fair of Thessaloniki, is obvious and makes the city an interesting place to live in.



Technological Educational Institutes

The Technological Educational Institutes in Greece are independent self-governed legal entities supervised by the Ministry of Education and Religious Affairs. They constitute an autonomous, individual entity in the Greek educational system.

The Technological Educational Institutes were established in 1983 (under Act 1404/83) when the Centres of Higher Technical and Vocational Education (K.A.T.E.E.) were abolished. From this point on, both Universities (A.E.I.) and Technological Educational Institutes were enacted into the same stage of tertiary education.

According to the recent law 2916/01 the Tertiary Education in Greece constitutes of two parallel sectors:

- the University sector including all the universities of the country, the Polytechnics and the Higher School of Fine Arts and
- the Technological sector including all the Technological Educational Institutes of the country.

The Institutes of the two sectors of the Tertiary Education function complementarily to each other, with clearly distinguished features and different roles, aim and mission.

The Institutes of the Technological sector give emphasis on the education of high level executives of application in various fields who, with their theoretical and practical scientific training:

- link the knowledge and the application of different professional fields.
- use and promote contemporary technology and methods, practices and techniques of application.

In this frame, the Institutes of the Technological sector combine the development of the appropriate theoretical

background of studies with high level laboratory and practical training. At the same time they promote relevant technological research and develop technical training and innovations.

According to the founding law, the mission of the Technological Institutes is:

- To provide students with theoretical and vocational training, adequate for technological, scientific or artistic knowledge, skills and abilities.
- To contribute to the development of responsible citizens capable of contributing as experts to the economic, social and cultural development of the country.
- To contribute to the professional orientation of the students, to attend to the graduates' need for continuous education and training and to provide life-long educational opportunities for Greek citizens.
- To keep an interactive relationship with the relevant productive units and the established fields of economy.
- To collaborate with other Institutes and Universities in Greece or abroad in order to fulfill their role.
- To inform the public opinion about the accomplishments of the Institute's objectives.
- To cooperate with the Universities in a common effort for a self-reliant economical development of the country.
- To participate in research programmes concerning issues of applied technology.

The Technological Educational Institute of Thessaloniki (T.E.I.THE.)

The T.E.I.THE. is one of the oldest Technological Educational Institutes in our country.

It provides courses in 24 fields of undergraduate studies to approximately 21000 students, and has managed to promote its name and reputation as a Technological Educational Institute of high quality in the Greek market, particularly in the market of Northern Greece.

It keeps abreast of international trends, promotes research, and its main goal is to prepare the next generation of businessmen and professionals who will participate dynamically and effectively in the challenges of an international and globalized market in the public or private sector.

In general the members of T.E.I.THE. community are:

- 430 members of permanent educational staff in the following rankings:
 - Professors
 - Associate Professors
 - Assistant Professors
 - Applications Professors
- Part-time educational staff, according to the needs of the Institute every year.
- Technical support staff for lab work
- 230 administrative staff
- 21000 students



General Information

The T.E.I.THE. campus is located on the 15th km. of the Thessaloniki-Athens national road, at the entrance of the town of Sindos and spreads out over an area of 1.415.000 square metres (approximately 400 acres).

Bus No 52 of urban transportation (ΟΑΣΘ) goes straight to the campus.

The campus includes:

- Classrooms, laboratories, amphitheatres, administration offices and the teaching staff offices.
- The farm land with greenhouses, stables for cattle, sheep and goats, the poultry-farm and the farm-staff facilities. There is also an orchard, where corn, wheat and barley are cultivated together with almond, peach, pear, apricot and olive trees. The farm serves the needs of the students of the School of Agricultural Technology.
- One Students' Hall and one Students' Restaurant (there is another Students' Hall and another Restaurant in the centre of the city).
- An Infirmary Health Centre.
Working hours: 08.00-18.00
- The Library.
There is a central library and many smaller ones, however they cannot satisfy the students' needs, so a new library is going to be constructed.
- The Publishing Centre.
The objective of this centre is to improve the students' educational material and to edit all the informative material concerning the Institute's activities.

Students' welfare

The T.E.I.THE. offers to the students:

- I.K.Y. scholarships by the State Foundation for Scholarships awarded for the best students.
- Access to interest-free loans depending on their financial situation and their academic performance.
- Free books and notes.
- Accommodation to the two students' Halls (one at the T.E.I.THE. premises, the other in the city centre, Hotel Delta in Egnatia street).
- Meals at the two restaurants (one at the T.E.I.THE. premises, the other in the city centre).
- Free and full medical and hospital care.
- Postponement of army service till graduation.
- Reduced fares for all transportation means.



The T.E.I. Governing Bodies

- **The decision making bodies of T.E.I.:**

The General Assembly consists of the President, the two Vice Presidents, the General Secretary of the Institute, the Director of each School, the Head of the Departments, the Director of the Centre of Foreign Languages and Physical Education, one representative of the Administration Staff, one representative of the Technical Support Staff, representatives of the Students' Union (50% of the teaching staff participating in the Assembly). The secretary of the General Assembly is always a member of the Administration Staff, appointed by the President of the Institute.

The Council of T.E.I. consists of the President, the two Vice Presidents, the Directors of the Schools, one representative of the Students' Union. The General Secretary participates in the Council, but he can vote only for subjects related to administration matters. The Director of the Centre of Foreign Languages and Physical Education participates in the Council without voting only for subjects related to the centre.

The two Vice-Presidents

The President.

- **The decision making Bodies of each School:**

The Council of the School consists of the Director of each School, the Heads of the Departments and representatives of the Students' Union (40% of the teaching staff participating in the Council), and one member of the Administration or Technical Support staff, according to the subjects on the agenda.

The School Director.

- **The decision making Bodies of each Department:**

The General Assembly of the Department consists of the academic staff of the department and representatives of the Students Union (40% of the total number of members of academic staff.)

The Council of the Department consists of the Head of the Department, the course group in charge, one student representative and one representative of the Technical Support staff for subjects on the agenda related to technical matters.

The Head of the Department.

- **The decision making bodies of each Course Group:**

The General Assembly of the Course Group consists of the academic staff of the Course Group and two representatives of the Students Union.

The Course Group in charge.

Course Group-Subject Group Supervisor

The President, Vice-Presidents, Directors of Schools and Heads of the Departments are elected by the academic staff, representatives of the Administration Staff, the Technical Support Staff and the Students' Union every 3 years.

Administration

The General Secretary, who holds the highest position in administration, oversees the Administrative Support Office. He/She is elected by T.E.I.'s Council and acts as the manager of administration in general. In addition he/she oversees the secretary of each school and department on issues concerning secretarial functioning and organisation. Furthermore, he/she exercises payroll duties.

Administrative Support Duties include:

Administrative Affairs Department

This department is responsible for the legal archives and takes care of legal support actions. It handles judicial matters that arise from the institutes' decisions as well as all matters concerning the functional state of its personnel and sets forth all necessary actions.

Department of Economic Affairs

This department is responsible for preparing and maintaining the budget. It supervises and processes all matters concerning funding and payment of the local budget as well as that of the State Investments. Furthermore, it is responsible for announcing the decision for the lowest or highest bid in public auctions, processing matters concerning the payment of personnel, and issuing all payment orders. It handles all financial transactions as well as the accounting and other economic matters concerning the T.E.I.

Secretariat and Administrative Department

This department receives all incoming correspondence. It abides by the general protocol, handles and dispatches all correspondence with each school, with the Public Domain as well as with private individuals. It is responsible for taking care of the T.E.I. archives.



Regulations of Studies

Admission Requirements

Greek applicants must have successfully completed six years of secondary education to be able to enter a Technological Institute. Their successful entrance to any university or technological institute of the country depends on grades they have got in the last year of their secondary education studies.

Academic year

The studies at T.E.I. are organized into semesters. The academic year starts on 1st September each year and ends on 2nd - 5th of July of the following year. Each academic year is divided into two semesters. Each semester consists of 15 weeks of classes and two periods of examinations.

Teaching starts on September 15th for the winter semester and February 15th for spring semester. For the winter semester the examination periods are 15th-30th January and 1st-15th February and for the spring semester the examination periods are 15th-30th June and 1st- 15th September.

Programme of studies

Most of the classes in every department are compulsory, but there is also a wide variety of compulsory elective and optional courses.

A class may take the form of a lecture session, laboratory, seminar, exercise, project or educational visits, according to the requirements of the Programme of Studies. In any case a successful final examination test is required.

Degrees awarded

The Departments of the Technological Educational Institutes award degrees equivalent to a four-year diploma in their respective fields.

For graduation, a minimum of 8 semesters is required. In terms of credit units, this period corresponds to a total of 240 units. To graduate from the Institute a student must successfully complete the number of credit units.

In order to obtain their degree the students must elaborate a research project (thesis) under the supervision of teaching staff, at the 8th semester of their studies.

They must also fulfil a six-month practical training in specific work positions of the state sector as well as in private enterprises. Student trainees are paid and insured in all cases.

Grading System

The grading system is numerical, from 1 to 10. The final grade point average of all courses will be recorded on the degree, according to the following classification scheme.

Excellent	: 8,5-10
Very Good	: 7- 8,4
Good	: 5-6,9

Postgraduate Studies

The T.E.I.THE. graduates have the following possibilities for postgraduates studies:

- at Greek universities
- at universities and Tertiary Education Institutes abroad
- at post-graduate programmes at T.E.I.THE. in cooperation with universities.

Centre of Foreign Languages and Physical Education

• Foreign Languages

The Centre of Foreign Languages at T.E.I.THE. serves the needs of teaching foreign languages to all the students of all the departments of the whole Institute.

Five foreign languages are taught: English, French, German, Italian and Russian.

According to the Programme of Studies of each Department the foreign languages are compulsory, compulsory elective or optional. The aim of the foreign language courses is the teaching of the specific terminology of each Department (ESP).

The language teaching staff numbers 20 persons permanent staff and about 10 persons part-time staff.

• Physical Education

The sports activities belong to the Centre of Foreign Languages and Physical Education and offer the students the possibility to participate in various sports and physical activities. The objective is to help the students develop physical and emotional abilities and to make them adopt a more healthy and active attitude.



The programme includes training in sports such as football, basketball, volleyball, swimming, sailing, winter ski, shooting, archery, martial arts, folk dances, aerobics and track and field sports.

There are internal championships among the different Departments of the T.E.I.THE. organized in most sport teams during the academic year. Teams of different sports participate in all National Student Championship Events organized by the Greek Athletic Committee of Higher Education.

• Modules for Erasmus Students

• Greek Language Teaching Course

Important task of the teaching staff of the centre is the teaching and promotion of the Greek language as a foreign language to the foreign Socrates-Erasmus students. Apart from the Greek language, the course includes information in matters of Greek culture, civilization, history, politics and way of life in Greece. At the end of the semester an educational visit takes place to Archaeological sites and museums in Thessaloniki and Northern Greece.

All the Erasmus students may attend this course and get 6 ECTS credits.

• Specific Courses in English language

Five courses are taught in English language by a member of the staff of the Centre of Foreign Languages, as part of the curriculum of the Department of Marketing and Advertising. These courses are: Introduction to Marketing, Marketing, Advertising, Marketing Communications and Multicultural Management. All the Erasmus students of all the Departments may attend these courses and get 2 ECTS credits for each course.

Career Services Office

The Career Services Office, established in 1997, links education with the labour market. With this service the T.E.I.THE. aims at the continuous exchange of information between the Technological Institute and the socio-economic environment and records the needs of the market and the ability and skills of the students and the graduates.

The Career Service Office :

- delivers detailed information about:
 - vacancies and offered jobs,
 - postgraduate studies and scholarships in Greece or abroad
 - educational seminars.
- organises various events and Career Days for the different Departments of the Institute
- provides Career Counselling Services to a large number of graduates every year
- organises workshops on CV writing, interview skills and the job-search strategies.



Contact:

Location: Building of School of Health and Medical Care (Σ.Ε.Υ.Π.), 1st floor.

Office Hours: 8.00 am – 2.00 pm on weekdays

Tel: +302310791480/481

Fax: +302310791482

E-mail: career@admin.it.teithe.gr

Website: www.career.teithe.gr

International Activities and Corporation

A number of European programmes are in progress:

The SOCRATES/ERASMUS Programme

After the acquisition of the Erasmus University Charter-E.U.C from the European Community, the T.E.I.THE. actively joined the Socrates/Erasmus programme of the European Unit. So, our Institute co-operates with numerous important European Educational Institutes and participates in the following Erasmus activities:

- Student Mobility –SM– Exchange of students for a period of 3 to 12 months which is considered as time spent at the student's home Institute.
- Teaching-staff mobility –TS– for short-term teaching visits.
- Organisation of Mobility –OM– which organizes and promotes mobility such as:
 - ✓ Visits for preparation or control of the mobility of the Erasmus Students

- ✓ Production and distribution of information material about the activities of Erasmus mobility.
- ✓ Preparation, supervision and valuation of student and teaching-staff mobility.

- Preparatory visits –PV– to European Educational Institutes for new co-operations.
- European Credit Transfer System –ECTS– a European System of transferring academic credits.
- Intensive Programmes –IP–.
- New Curriculum Development Projects –PROG/MOD.
- Thematic Networks - University Programmes of mutual interest.

Contact:

Location: Building of School of Health and Medical Care (Σ.Ε.Υ.Π.), 2nd floor.

Tel: +30 2310791479

Fax: +30 231079149 or +30 2310799152

E-mail: socrates@teithe.gr



The Leonardo da Vinci Programme

The Leonardo da Vinci is a programme of the European Unit created to support the actions of the country-members in the field of formation promoting the collaboration of different countries.

Within the framework of this programme the T.E.I. of Thessaloniki collaborates with different enterprises of the country members of the European Unit and implements projects concerning the movement of our students to other European countries for their compulsory Practical Training at the end of their studies. Through this programme the students have the opportunity to obtain a high level professional experience, to come in contact with a different cultural environment, to collaborate with people of different nationalities, to improve their foreign language competence and to learn different methods of management and new business activities.

The financial support of the programme covers the expenses of the students for transportation, accommodation, language-cultural preparation and insurance. The exact amount of money for each student depends on the host country and is authorized by the National Agency.

Contact person: Nerantzis Kostas

Location: Building of School of Health and Medical Care (Σ.Ε.Υ.Π.), 2nd floor.

Tel/fax: +30 2310791479

Email: leonardo@teithe.gr

Website: www.leonardo.teithe.gr

Jean Monnet Programme

This programme is held every spring semester and deals with informing young students about subjects concerning the European Union, the function of the Union organs, the institutions and their european intergration.

Contact:

Tel/fax: +30 2310791203

Email: isabram@acc.teithe.gr

The mENU Project

According to the model developed by the mENU project, the European Networked University, ENU, is a consortium of independent higher education institutions providing education through net-based programmes (e-learning) to students in Europe and beyond. ENU does not grant degrees, certificates or diplomas. These are granted by the respective degree providing university. The ENU organisation is facilitating the delivery of joint masters' level courses and programmes on-line. The ENU co-operation is stated in a signed partnership agreement.

This agreement was signed by the following eleven European Universities:

- Stord/Haugesund University College
- TISIP Reasearch Foundation
- Agder University College
- Norwegian University of Science and Technology
- TEI of Thessaloniki
- National Technical University of Athens
- Universita di Roma «La Sapienza»
- University of Greenwich
- University of Turku (representing FVU)
- Kalmar University College
- Univesidad Politecnica de Valencia.

Contact person: Demosthenis Stamatis

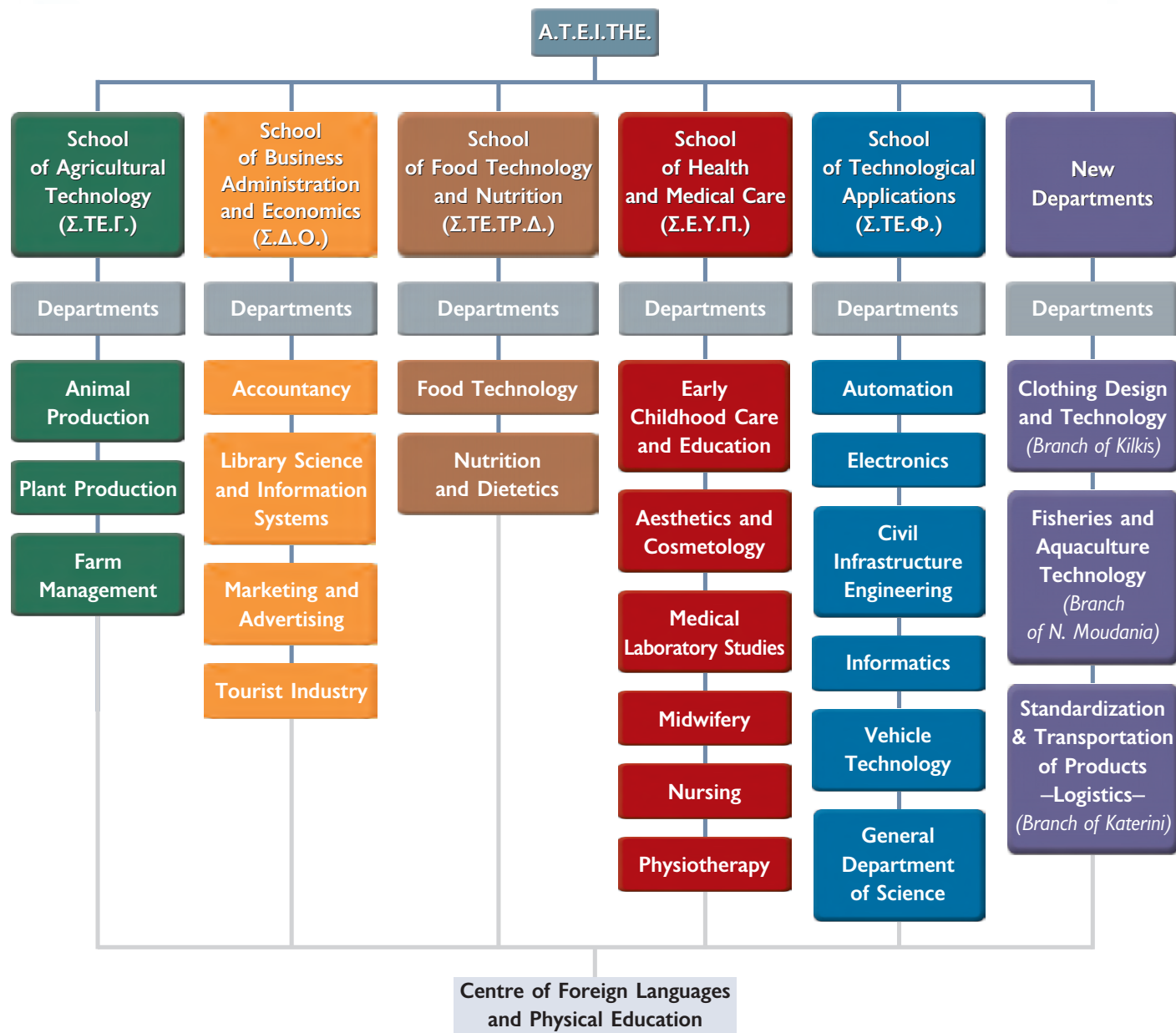
Email: demos@it.teithe.gr

Website: www.hsh.no/menu

G.U.Net

The T.E.I.THE. is connected with Greek Universities network (G.U. Net), gaining access to information sources all over the world.

Schools' Organization Chart



PROGRAMME OF STUDIES

School of Agricultural Technology



ΠΡΟΠΤΥΧΙΑΚΑ ΠΡΟΓΡΑΜΜΑΤΑ ΣΠΟΥΔΩΝ ΤΟΥ ΑΤΕΙ ΘΕΣΣΑΛΟΝΙΚΗΣ

ΕΠΕΑΕΚ Μέτρο 2.2 Ενέργεια 2.2.2 Κατηγορία Πράξεων 2.2.2.α



ΥΠΟΥΡΓΕΙΟ ΕΘΝΙΚΗΣ ΠΑΙΔΕΙΑΣ ΚΑΙ ΘΡΗΣΚΕΥΜΑΤΩΝ
ΕΙΔΙΚΗ ΥΠΗΡΕΣΙΑ ΔΙΑΧΕΙΡΙΣΗΣ ΕΠΕΑΕΚ

ΕΥΡΩΠΑΪΚΗ ΕΝΩΣΗ
ΣΥΓΧΡΗΜΑΤΟΔΟΤΗΣΗ
ΕΥΡΩΠΑΪΚΟ ΚΟΙΝΩΝΙΚΟ ΤΑΜΕΙΟ



Η ΠΑΙΔΕΙΑ ΣΤΗΝ ΚΟΡΥΦΗ
Επιχειρησιακό Πρόγραμμα
Εκπαίδευσης και Αρχικής
Επαγγελματικής Κατάρτισης

DEPARTMENT OF ANIMAL PRODUCTION

Graduates of this Department can be self-employed or cooperate with other scientists in the study, research and application of technology on contemporary and specialized areas of Animal Breeding Science such as production, handling, marketing, preservation, packaging, management of animal products and animal nutrition as well as animal protection and reproduction.

PROGRAMME OF STUDIES

1st semester

CODE	COURSE	C/CE	LECT	LAB	TOTAL	ECTS CREDITS	PREQ
			HOURS PER WEEK				
ZΠ110	Biochemistry	C	2	2	4	5	—
ZΠ120	Applied Mathematics	C	3	—	3	4	—
ZΠ130	Plant Science Technology	C	2	2	4	5	—
ZΠ140	Veterinary Microbiology Immunology	C	2	3	5	5.5	—
ZΠ150	Farm Animal Anatomy	C	3	3	6	7	—
ZΠ160	Man and Animal Production	C	2	—	2	3.5	—
Total			14	10	24	30	

2nd semester

CODE	COURSE	C/CE	LECT	LAB	TOTAL	ECTS CREDITS	PREQ
			HOURS PER WEEK				
ZΠ210	Fodder Plants-Ranges	C	2	3	5	5.5	—
ZΠ220	Biometry	C	2	3	5	5.5	—
ZΠ230	Farm Animal Physiology	C	2	3	5	5.5	ZΠ150
ZΠ240	Farm Animal Parasitology	C	2	3	5	5.5	—
ZΠ250	Agricultural Machines	C	2	2	4	4.5	—
*	A.E.L.H. (see the table)*	CE	2	—	2	3.5	—
Total			12	14	26	30	

3rd semester

CODE	COURSE	C/CE	LECT	LAB	TOTAL	ECTS CREDITS	PREQ
			HOURS PER WEEK				
ZΠ310	Farm Animal Genetics	C	3	2	5	6.5	ZΠ220
ZΠ320	Animal Nutrition I	C	3	3	6	7	ZΠ110
ZΠ330	Biological Husbandry	C	2	—	2	3.5	—
ZΠ340	Applied Pharmacology	C	3	—	3	4	—
ZΠ350	Farm Animal Internal Medicine	C	2	3	5	5.5	ZΠ230
*	A.E.L.H. (see the table)*	CE	2	—	2	3.5	—
Total			15	8	23	30	

4th semester

CODE	COURSE	C/CE	LECT	LAB	TOTAL	ECTS CREDITS	PREQ
			HOURS PER WEEK				
ZΠ410	Farm Animal Infectious Diseases/Hygiene	C	2	3	5	5.5	ZΠ140
ZΠ420	Animal Nutrition II	C	3	3	6	7.5	ZΠ320
ZΠ430	Farm Animal Reproduction	C	3	3	6	7.5	—
ZΠ440	Computer Science I	C	2	2	4	5	—
*	CE (See the table)*	CE	2	2	4	4.5	—
Total			12	13	25	30	

5th semester

CODE	COURSE	C/CE	LECT	LAB	TOTAL	ECTS CREDITS	PREQ
			HOURS PER WEEK				
ZП510	Computer Science II	C	2	2	4	4.5	ZП440
ZП520	Dairy Production	C	3	3	6	7	—
ZП530	Poultry Production	C	3	3	6	7	—
ZП540	Inspection of Animal Production	C	2	2	4	5	—
ZП550	English Terminology	C	—	3	3	2	—
*	CE (See the table)*	CE	2	2	4	4.5	—
Total			12	15	27	30	

6th semester

CODE	COURSE	C/CE	LECT	LAB	TOTAL	ECTS CREDITS	PREQ
			HOURS PER WEEK				
ZП610	Farm Animal Genetics	C	3	3	6	7	—
ZП620	Pig Production	C	3	3	6	7	ZП310
ZП630	Sheep and Goat Breeding	C	3	3	6	7	—
ZП640	Livestock Accounting Technical Economic Analysis	C	2	2	4	4.5	—
ZП650	Bee Production	C	2	2	4	4.5	—
Total			13	13	26	30	

7th semester

CODE	COURSE	C/CE	LECT	LAB	TOTAL	ECTS CREDITS	PREQ
			HOURS PER WEEK				
ZΠ710	Common Agricultural Policy European Union	C	2	—	2	4	—
ZΠ720	Meat Technology	C	2	3	5	6	—
ZΠ730	Milk Technology	C	2	3	5	6	—
ZΠ740	Seminar	C	—	3	3	2.5	—
ZΠ750	Animal Housing Constructions and Equipment	C	3	3	6	7	—
*	CE (See the table)*	CE	2	2	4	4.5	—
Total			11	14	25	30	

8th semester

CODE	COURSE	C/CE	LECT	LAB	TOTAL PERIOD	ECTS CREDITS
Z1810	Diploma Thesis	C	—	—	6 months	20
Z1820	Practical Training	C	—	—	6 months	10
Total						30

***TABLE OF A.E.L.H COURSES**

A. Humanity studies	
CODE	COURSE
ZΠ01	Professional Ethics
ZΠ02	Agricultural Sociology

B. Administration	
CODE	COURSE
ZΠ03	Management of Animal Farms
ZΠ04	Agricultural Cooperatives - Agricultural Unions

- (choice of two courses, one from each of two categories)

***CE: TABLE OF COMPULSORY ELECTIVE COURSES**

CODE	COURSE
ZΠ05	Fish and Shellfish Production
ZΠ06	Beef Cattle Production
ZΠ07	Fur Animal Production

CODE	COURSE
ZΠ08	Rabbit Breeding
ZΠ09	Horse Breeding
ZΠ10	Pets Breeding

AELH : Administration, Economics, Legislation, Humanities
Compulsory Elective Courses

C : Compulsory

CE : Compulsory Elective

LECT : Lecture

LAB : Laboratory

ECTS : European Credit Transfer System

PREQ : Prerequisite

DEPARTMENT OF PLANT PRODUCTION

Graduates of our Plant Production Department have the necessary background to actively face and solve problems in the production chain and to contribute to the agricultural development. They also have enough training to support laboratory work, including instrumental analysis.

PROGRAMME OF STUDIES

1st semester

CODE	COURSE	C/CE	LECT	LAB	TOTAL	ECTS CREDITS	PREQ
			HOURS PER WEEK				
ΦΠ110	Introduction to Chemistry	C	2	2	4	5	—
ΦΠ120	Applied Mathematics	C	2	—	2	2	—
ΦΠ130	Computer Use	C	2	2	4	5	—
ΦΠ140	Plant Anatomy and Morphology	C	2	2	4	5	—
ΦΠ150	Principles of Agronomy	C	3	2	5	6,5	—
ΦΠ160	Agricultural Machinery	C	3	2	5	6,5	—
Total			14	10	24	30	

2nd semester

CODE	COURSE	C/CE	LECT	LAB	TOTAL	ECTS CREDITS	PREQ
			HOURS PER WEEK				
ΦΠ210	Soil Science	C	3	3	6	7	—
ΦΠ220	Biochemistry	C	2	2	4	5	—
ΦΠ230	Plant Physiology	C	2	2	4	5	—
ΦΠ240	Winter Cereals and Legumes	C	3	2	5	6,5	—
ΦΠ250	Spreadsheets and Multimedia and Seminar	C	3	2	5	6,5	—
Total			13	11	24	30	

3rd semester

CODE	COURSE	C/CE	LECT	LAB	TOTAL	ECTS CREDITS	PREQ
			HOURS PER WEEK				
ФП310	Pomology	C	3	2	5	6	—
ФП320	Principles of Entomology	C	2	2	4	5	—
ФП330	Systematic Botany	C	2	2	4	5	—
ФП340	Genetics	C	3	2	5	6	—
ФП350	Biometry and Field Experimentation	C	2	2	4	5	—
ФП360	LanguageTerminology	C	4	—	4	3	—
Total			15	10	25	30	

4th semester

CODE	COURSE	C/CE	LECT	LAB	TOTAL	ECTS CREDITS	PREQ
			HOURS PER WEEK				
ФП410	Introduction to Vegetable Crop Production	C	3	2	5	6,5	—
ФП420	Deciduous Fruit Crop Production	C	3	2	5	6,5	—
ФП430	Plant Pathology	C	2	3	5	5,5	—
Group A: Direction of Horticultural Plants							
ФП440	Viticulture	C	3	2	5	6,5	—
ФП450	Propagation of Horticultural Plants	C	2	2	4	5	—
Group B: Direction of Field Crops Production							
ФП441	Spring Cereals and Legumes	C	2	2	4	5	—
ФП451	Industrial Plants	C	3	2	5	6,5	—
Total			13	11	24	30	

5th semester

CODE	COURSE	C/CE	LECT	LAB	TOTAL	ECTS CREDITS	PREQ
			HOURS PER WEEK				
ΦΠ510	Weed Science	C	2	2	4	5	—
ΦΠ520	Technoeconomic Analysis and Agricultural Accounting	C	4	—	4	5	—
ΦΠ530	Soil Fertility, Plant Nutrition and Fertilizers	C	2	3	5	5	—
Group A: Direction of Horticultural Plants							
ΦΠ540	Vegetable Crop Production	C	2	2	4	5	—
ΦΠ550	Post harvest Physiology and Handling of Horticultural Plants	C	2	3	5	5	—
ΦΠ560	Entomology of Horticultural Plants	C	2	2	4	5	—
Group B: Direction of Field Crops Production							
ΦΠ541	Biological Agriculture	C	2	2	4	5	—
ΦΠ551	Fodder Plants and Pastures	C	2	3	5	5	—
ΦΠ561	Entomology of Field Crops & Stored Products	C	2	2	4	5	—
Total			14	12	26	30	

6th semester

CODE	COURSE	C/CE	LECT	LAB	TOTAL	ECTS CREDITS	PREQ
			HOURS PER WEEK				
ΦΠ610	Rural Sociology and Rural Development	C	2	—	2	4	—
ΦΠ620	Floriculture	C	2	3	5	5	—
ΦΠ630	Introduction to Irrigation Systems & Drainage	C	2	3	5	5	—
ΦΠ640	Plant Improvement	C	3	3	6	6	—
Group A: Direction of Horticultural Plants							
ΦΠ650	Olive Production	C	2	3	5	5	—
ΦΠ660	Diseases of Horticultural Plants	C	2	3	5	5	—
Group B: Direction of Crop Production							
ΦΠ651	Oily and Aromatic Plants	C	2	3	5	5	—
ΦΠ661	Diseases of Field Crop	C	2	3	5	5	—
Total			12	15	27	30	

7th semester

CODE	COURSE	C/CE	LECT	LAB	TOTAL	ECTS CREDITS	PREQ
			HOURS PER WEEK				
ΦΠ710	Pesticides	C	2	2	4	5	—
ΦΠ720	Agricultural Policy	C	3	—	3	3	—
ΦΠ730	Marketing and Trade of Agricultural Products	C	2	2	4	5	—
ΦΠ740	Land Reclamation and Soil Management	C	2	2	4	5	—
Group A: Direction of Horticultural Plants							
ΦΠ750	Outdoor Ornamental Plants	C	2	2	4	5	—
ΦΠ760	Citrus and other Tropical Crops	C	3	2	5	7	—
Group B: Direction of Crop Production							
ΦΠ751	Seed Production	C	2	2	4	5	—
ΦΠ761	Technology of Post harvest Field Crop Production	C	3	2	5	7	—
Total			14	10	24	30	

8th semester

CODE	COURSE	C/CE	LECT	LAB	TOTAL PERIOD	ECTS CREDITS
ΦΠ810	Diploma Thesis	C	—	—	6 months	20
ΦΠ820	Practical Training	C	—	—	6 months	10
Total						30

OPTIONAL COURSES

Agro-Meteorology

Introduction to Animal Science

Agricultural Industries

Apiculture

Biology of Horticultural Plants

Greenhouse Machinery and Equipment

Management of Water Resources

Computer Use in Agriculture

Technoeconomic Project and Studies

Small Fruit Production

Agro-Biotechnology

Pump Machinery for Irrigation

Efficiency of Agricultural Machinery

Ampelography

Technology of Aromatic Plants

Agro-tourism

C : Compulsory**CE** : Compulsory Elective**LECT** : Lecture**LAB** : Laboratory**ECTS** : European Credit Transfer System**PREQ** : Prerequisite

DEPARTMENT OF FARM MANAGEMENT

Graduates of this Department are entitled to employment in the whole spectrum of management and administration of agricultural and animal husbandry units.

PROGRAMME OF STUDIES

1st semester

CODE	COURSE	C/CE	LECT	LAB	TOTAL	ECTS CREDITS	PREQ
			HOURS PER WEEK				
ΓΔ110	Mathematics for Agricultural Economists	C	4	—	4	5	—
ΓΔ120	Microeconomics	C	4	—	4	5	—
ΓΔ130	Computer Applications	C	2	2	4	6	—
ΓΔ140	Animal Science	C	3	2	5	7	—
ΓΔ150	Plant Science	C	3	2	5	7	—
Total			16	6	22	30	

2nd semester

CODE	COURSE	C/CE	LECT	LAB	TOTAL	ECTS CREDITS	PREQ
			HOURS PER WEEK				
ΓΔ210	Management	C	4	—	4	5	—
ΓΔ220	Financial Mathematics	C	2	—	2	4	—
ΓΔ230	Accounting	C	3	2	5	7	—
ΓΔ240	Macroeconomics	C	4	—	4	5	—
ΓΔ250	Spreadsheets	C	1	3	4	5	ΓΔ130
ΓΔ260	Principles of Cooperatives	C	2	—	2	4	—
Total			16	5	21	30	

3rd semester

CODE	COURSE	C/CE	LECT	LAB	TOTAL	ECTS CREDITS	PREQ
			HOURS PER WEEK				
ΓΔ310	Agricultural Statistics	C	3	2	5	7	—
ΓΔ320	Rural Sociology	C	2	—	2	4	—
ΓΔ330	Agricultural Accounting	C	3	2	5	7	ΓΔ230
ΓΔ340	Soil Science and Fertilizers	C	3	2	5	7	ΓΔ150
ΓΔ350	Rural Cooperatives	C	3	—	3	5	—
Total			14	6	20	30	

4th semester

CODE	COURSE	C/CE	LECT	LAB	TOTAL	ECTS CREDITS	PREQ
			HOURS PER WEEK				
ΓΔ410	Foreign Language Terminology in AgroEconomics	C	1	2	3	4	—
ΓΔ420	Agricultural Policy	C	4	—	4	5.5	—
ΓΔ430	Tractors and Farm Machinery	C	2	2	4	6	—
ΓΔ440	Agricultural Extension	C	2	2	4	6	ΓΔ320
*	CE (See the table)*	CE	2	2	4	5.5	—
**	CE (See the table)**	CE	2	—	2	3	—
Total			13	8	21	30	

5th semester

CODE	COURSE	C/CE	LECT	LAB	TOTAL	ECTS CREDITS	PREQ
			HOURS PER WEEK				
ΓΔ510	Marketing of Agricultural Products	C	4	—	4	5	ΓΔ120
ΓΔ520	Cost Accounting of Agricultural Products	C	2	2	4	5.5	ΓΔ330
ΓΔ530	Standardization and Packaging of Agricultural Products	C	2	2	4	5.5	ΓΔ120 ΓΔ330
ΓΔ540	General and Applied Phytopathology	C	2	2	4	5.5	ΓΔ150
*	CE (See the table)*	CE	2	2	4	5.5	—
**	CE (See the table)**	CE	2	—	2	3	—
Total			14	8	22	30	

6th semester

CODE	COURSE	C/CE	LECT	LAB	TOTAL	ECTS CREDITS	PREQ
			HOURS PER WEEK				
ΓΔ610	Evaluation of Investments in Agriculture	C	5	—	5	6	ΓΔ220
ΓΔ620	Rural Development Policy	C	4	—	4	5	ΓΔ420
ΓΔ630	Total Quality Management	C	3	—	3	4.5	—
ΓΔ640	General and Applied Entomology	C	2	2	4	6	ΓΔ150
*	CE (See the table)*	CE	2	2	4	5.5	—
**	CE (See the table)**	CE	2	—	2	3	—
Total			18	4	22	30	

7th semester

CODE	COURSE	C/CE	LECT	LAB	TOTAL	ECTS CREDITS	PREQ
			HOURS PER WEEK				
ΓΔ710	Farm Management	C	5	—	5	6.5	—
ΓΔ720	Senior Students' Seminar	C	—	3	3	4	—
ΓΔ730	Rural Development Farmers' Project	C	4	—	4	5	ΓΔ420 ΓΔ620
ΓΔ740	Crop Protection Chemicals	C	2	2	4	6	ΓΔ540 ΓΔ640
*	CE (See the table)*	CE	2	2	4	5.5	—
**	CE (See the table)**	CE	2	—	2	3	—
Total			15	7	22	30	

8th semester

CODE	COURSE	C/CE	LECT	LAB	TOTAL PERIOD	ECTS CREDITS
ΓΔ810	Diploma Thesis	C	—	—	6 months	20
ΓΔ820	Practical Training	C	—	—	6 months	10
Total						30

***CE: FOUR-HOUR COMPULSORY ELECTIVE COURSES**

CODE	COURSE	C/CE	LECT	LAB	TOTAL	ECTS CREDITS	PREQ
			HOURS PER WEEK				
ΓΔ401	Field Crop Production	CE	2	2	4	5.5	—
ΓΔ402	Livestock Science	CE	2	2	4	5.5	—
ΓΔ403	Database Management	CE	2	2	4	5.5	—
ΓΔ404	European Integration	CE	4	—	4	5.5	—
ΓΔ405	Multimedia	CE	2	2	4	5.5	—
ΓΔ406	Irrigation Systems	CE	2	2	4	5.5	—
ΓΔ407	Farm Appraisal	CE	4	—	4	5.5	—
ΓΔ408	Agricultural Buildings	CE	2	2	4	5.5	—
ΓΔ409	Nutrition of Farm animals Forage	CE	2	2	4	5.5	—
ΓΔ411	Fruit Production	CE	2	2	4	5.5	—
ΓΔ412	Rural Socioeconomic Research	CE	2	2	4	5.5	—
ΓΔ413	Geographic Information Systems	CE	2	2	4	5.5	—
ΓΔ414	Greenhouse Cultures	CE	2	2	4	5.5	—
ΓΔ415	Efficiency of Agricultural Machinery	CE	2	2	4	5.5	—
ΓΔ416	Agricultural Market Research	CE	4	—	4	5.5	—
ΓΔ417	Agricultural Markets	CE	4	—	4	5.5	—
ΓΔ418	Stored Product Pests	CE	2	2	4	5.5	—
ΓΔ419	Agricultural Education	CE	2	2	4	5.5	—

**CE: TWO-HOUR COMPULSORY ELECTIVE COURSES

CODE	COURSE	C/CE	LECT	LAB	TOTAL	ECTS CREDITS	PREQ
			HOURS PER WEEK				
ΓΔ201	Principles of Biological Agriculture	CE	2	—	2	3	—
ΓΔ202	Principles of Civil and Commercial Law	CE	2	—	2	3	—
ΓΔ203	Foreign Language Terminology in Agricultural Science	CE	—	2	2	3	—
ΓΔ204	Professional Ethics	CE	2	—	2	3	—
ΓΔ205	Sustainable Management of Agricultural Resources	CE	2	—	2	3	—
ΓΔ206	Marketing of Agricultural Machinery and Farm Supplier	CE	2	—	2	3	—
ΓΔ207	Agro-tourism	CE	2	—	2	3	—
ΓΔ208	Forms of Collective and Vertical Schemes in Agriculture	CE	2	—	2	3	—
ΓΔ209	Rural Community Development	CE	2	—	2	3	—
ΓΔ211	Methods of Decision-making	CE	2	—	2	3	—
ΓΔ212	Applied Agricultural Econometrics	CE	2	—	2	3	—
ΓΔ213	Agricultural Credit and Insurance	CE	2	—	2	3	—

C : Compulsory
CE : Compulsory Elective
LECT : Lecture

LAB : Laboratory
ECTS : European Credit Transfer System
PREQ : Prerequisite





PROGRAMME OF STUDIES

School of Business Administration and Economics



ΠΡΟΠΤΥΧΙΑΚΑ ΠΡΟΓΡΑΜΜΑΤΑ ΣΠΟΥΔΩΝ ΤΟΥ ΑΤΕΙ ΘΕΣΣΑΛΟΝΙΚΗΣ

ΕΠΕΑΕΚ Μέτρο 2.2 Ενέργεια 2.2.2 Κατηγορία Πράξεων 2.2.2.α



ΥΠΟΥΡΓΕΙΟ ΕΘΝΙΚΗΣ ΠΑΙΔΕΙΑΣ ΚΑΙ ΘΡΗΣΚΕΥΜΑΤΩΝ
ΕΙΔΙΚΗ ΥΠΗΡΕΣΙΑ ΔΙΑΧΕΙΡΙΣΗΣ ΕΠΕΑΕΚ



ΕΥΡΩΠΑΪΚΗ ΕΝΩΣΗ
ΣΥΓΧΡΗΜΑΤΟΔΟΤΗΣΗ
ΕΥΡΩΠΑΪΚΟ ΚΟΙΝΩΝΙΚΟ ΤΑΜΕΙΟ



Η ΠΑΙΔΕΙΑ ΣΤΗΝ ΚΟΡΥΦΗ
Επιχειρησιακό Πρόγραμμα
Εκπαίδευσης και Αρχικής
Επαγγελματικής Κατάρτισης

DEPARTMENT OF ACCOUNTING

The mission of the Department of Accounting is to provide students with the requisite comprehensive knowledge and skills necessary to pursue postgraduate studies and careers in the field of accounting in both the private and public sectors. Graduates may pursue careers as accountants specializing in financial, cost and management accounting, financial reporting, auditing, tax accounting, financial management and evaluation and installation of accounting information systems.

PROGRAMME OF STUDIES

1st semester

CODE	COURSE	C/CE	LECT	LAB	TOTAL	ECTS CREDITS	PREQ
			HOURS PER WEEK				
Λ110	Microeconomics	C	3	—	3	5	—
Λ120	Management	C	4	—	4	6	—
Λ130	Financial Accounting I	C	4	—	4	6	—
Λ140	Civil Law	C	4	—	4	5	—
Λ150	Mathematics for Economists	C	3	—	3	4	—
Λ160	Applications of Information Technology	C	—	4	4	4	—
Total			18	4	22	30	

2nd semester

CODE	COURSE	C/CE	LECT	LAB	TOTAL	ECTS CREDITS	PREQ
			HOURS PER WEEK				
A210	Macroeconomics	C	4	—	4	5	—
A220	Business Law	C	4	—	4	5	—
A230	Code of Accounting Books	C	4	—	4	5	—
A240	Financial Accounting II	C	4	—	4	6	A130
A250	Greek Uniform System of Accounts	C	4	—	4	5	—
A260	Applications of Spreadsheets and Databases	C	—	4	4	4	—
Total			20	4	24	30	

3rd semester

CODE	COURSE	C/CE	LECT	LAB	TOTAL	ECTS CREDITS	PREQ
			HOURS PER WEEK				
Λ310	Business Statistics	C	4	—	4	5	—
Λ320	Operational Research	C	4	—	4	5	—
Λ330	VAT Accounting	C	4	—	4	6	—
Λ340	Accounting of Corporate Entities	C	4	—	4	6	Λ240
Λ350	International Economic Relations	C	4	—	4	4	—
Λ360	Accounting Applications with Computers	C	—	4	4	4	—
Total			20	4	24	30	

4th semester

CODE	COURSE	C/CE	LECT	LAB	TOTAL	ECTS CREDITS	PREQ
			HOURS PER WEEK				
A410	Corporate Finance	C	4	—	4	6	—
A420	Cost Accounting	C	4	—	4	6	A240
A430	Income Tax Accounting	C	4	—	4	6	—
A440	Labour Law	C	3	—	3	3	—
A450	Computerized Financial Accounting	C	—	4	4	4	A240 A250
A461	Business Economics	CE	4	—	4	5	—
A462	Marketing						
A463	Maritime and Hotel Accounting						
Total			19	4	23	30	

5th semester

CODE	COURSE	C/CE	LECT	LAB	TOTAL	ECTS CREDITS	PREQ
			HOURS PER WEEK				
A510	Financial Statement Analysis	C	4	—	4	6	—
A520	Tax Accounting of Corporate Entities	C	4	—	4	5	—
A530	Financial Management	C	4	—	4	6	—
A540	Greek Chart of Cost Accounts	C	4	—	4	6	A420
A550	International Accounting Standards	C	2	—	2	3	—
A561	Organizational Behavior	CE	2	—	2	4	—
A562	Stock Exchange Market						
A563	European Union Law						
Total			20		20	30	

6th semester

CODE	COURSE	C/CE	LECT	LAB	TOTAL	ECTS CREDITS	PREQ
			HOURS PER WEEK				
Λ610	Auditing	C	4	—	4	6	—
Λ620	Business Terminology in English	C	4	—	4	6	—
Λ630	Computerized Cost Accounting	C	—	4	4	6	Λ540
Group A: Accounting and Information systems (2 of the 4)							
Λ641	Information Technology and Communications	CE	4	—		6	—
Λ642	Accounting Databases Design						
Λ643	Accounting Information Systems						
Λ644	Quantitative Methods		3		3		
Group B: Cost and Tax Accounting (2 of the 4)							
Λ651	Management Accounting	CE	4	—	4	6	—
Λ652	Production Planning and Control						
Λ653	Project Study and Management						
Λ654	Quantitative Methods		3		3		
Total			16/15	4	20/19	30	

OPTIONAL COURSE FOR THIS SEMESTER: Entrepreneurship I

7th semester

CODE	COURSE	C/CE	LECT	LAB	TOTAL	ECTS CREDITS	PREQ
			HOURS PER WEEK				
Λ610	Research Methods - Seminar	C	2	2	4	6	—
Λ620	Computerized Business Accounting	C	—	4	4	6	Λ450
Group A: Accounting and Information systems (3 of the 4)							
Λ641	Information Systems Auditing and Quality Assurance	CE	4	—	4	6	—
Λ642	Electronic Commerce						
Λ643	Management Information Systems						
Λ644	Enterprise Resource Planning Systems		2	2			
Group B: Cost and Tax Accounting (3 of the 4)							
Λ651	Corporate Strategy	CE	4	—	4	6	—
Λ652	Logistics						
Λ653	Corporate Mergers and Acquisitions						
Λ654	Enterprise Resource Planning Systems		2	2			
Total			12 /14	8 /6	20	30	

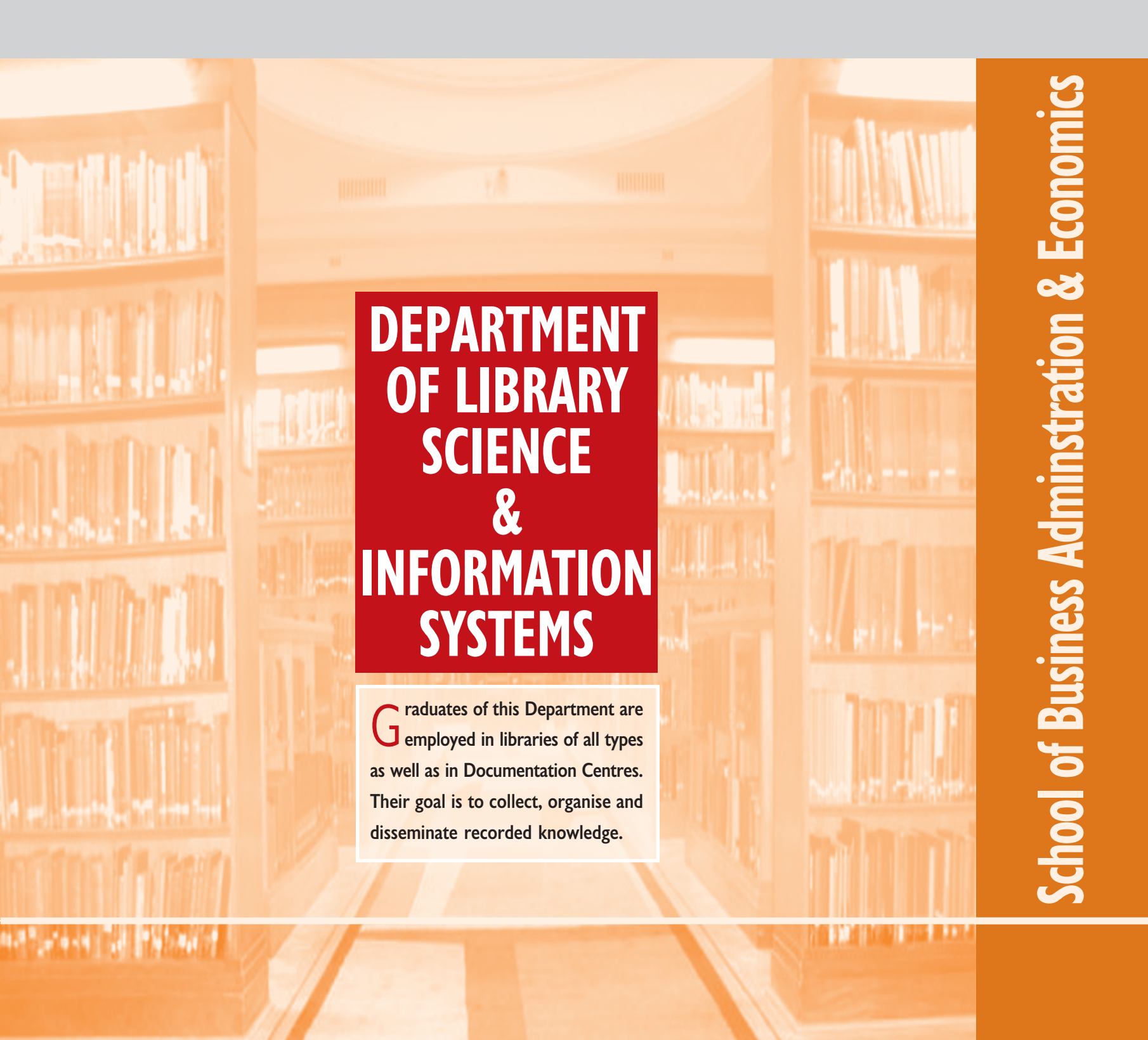
OPTIONAL COURSE FOR THIS SEMESTER: Tax Adjective Laws

8th semester

CODE	COURSE	C/CE	LECT	LAB	TOTAL PERIOD	ECTS CREDITS
Λ810	Diploma Thesis	C	—	—	6 months	20
Λ820	Practical Training	C	—	—	6 months	10
Total						30

C : Compulsory
CE : Compulsory Elective
LECT : Lecture

LAB : Laboratory
ECTS : European Credit Transfer System
PREQ : Prerequisite

The background of the entire page is a photograph of a library interior, featuring tall wooden bookshelves filled with books. The image is overlaid with a semi-transparent orange filter. A dark red rectangular box is centered on the page, containing the department's name in white text. Below this box is a white rectangular box containing a paragraph of text. On the right side of the page, there is a solid orange vertical bar with the school's name written in white text.

DEPARTMENT OF LIBRARY SCIENCE & INFORMATION SYSTEMS

Graduates of this Department are employed in libraries of all types as well as in Documentation Centres. Their goal is to collect, organise and disseminate recorded knowledge.

School of Business Administration & Economics

PROGRAMME OF STUDIES

1st semester

CODE	COURSE	C/CE	LECT	LAB	TOTAL	ECTS CREDITS	PREQ
			HOURS PER WEEK				
B110	Introduction to Library and Information Systems-Types of Libraries	C	2	—	2	4	—
B120	History of Libraries	C	3	—	3	2	—
B130	History of Greek Printing	C	2	—	2	2	—
B140	Educational Sociology	C	3	—	3	3	—
B150	Media for Libraries	C	—	4	4	5	—
B160	Introduction to Information Technology	C	1	3	4	5	—
B170	Introduction to the Organization of Library Material	C	3	—	3	5	—
B180	English I	C	2	2	4	2	—
B191	French I	CE	2	2	4	2	—
B192	German I						
Total			17	11	28	30	

2nd semester

CODE	COURSE	C/CE	LECT	LAB	TOTAL	ECTS CREDITS	PREQ
			HOURS PER WEEK				
B210	Introduction to Greek Information Services and Sources	C	1	2	3	4	—
B220	Introduction to Foreign Information Services and Sources	C	3	—	3	4	—
B230	Word Processing	C	—	3	3	3	B160
B240	Greek Literature I	C	2	—	2	3	—
B250	Multimedia for Libraries	C	—	4	4	5	—
B260	History of Writing	C	3	—	3	2	—
B270	Descriptive Cataloguing I	C	—	4	4	5	B170
B280	English II	C	2	2	4	2	—
B291	French II	CE	2	2	4	2	—
B292	German II						
Total			13	17	30	30	

3rd semester

CODE	COURSE	C/CE	LECT	LAB	TOTAL	ECTS CREDITS	PREQ
			HOURS PER WEEK				
B310	Descriptive Cataloguing II	C	—	4	4	5	B270
B320	Classification Schemes I	C	—	4	4	5	B170
B330	Greek Literature II	C	2	—	—	3	—
B340	Information Science	C	1	2	3	5	—
B350	Office Automation	C	—	3	3	5	—
B360	Copyright, Library Legislation	C	2	-	2	3	—
B370	English III	C	2	2	4	2	—
B381	French III	CE	2	2	4	2	—
B382	German III						
Total			9	17	26	30	

4th semester

CODE	COURSE	C/CE	LECT	LAB	TOTAL	ECTS CREDITS	PREQ
			HOURS PER WEEK				
B410	Descriptive Cataloguing III	C	—	4	4	5	B270 B310
B420	Classification Schemes II	C	—	4	4	5	—
B430	Subject Indexing I	C	—	4	4	5	—
B440	World Literature	C	2	—	2	3	—
B450	Collection Management	C	2	2	4	3	—
B460	Online Information Retrieval	C	—	4	4	5	—
B470	English IV	C	2	2	4	2	B370
B481	French IV	CE	2	2	4	2	—
B482	German IV						
Total			8	22	30	30	

5th semester

CODE	COURSE	C/CE	LECT	LAB	TOTAL	ECTS CREDITS	PREQ
			HOURS PER WEEK				
B510	Subject Indexing II	C	—	4	4	5	B430
B520	Library Automation I	C	4	—	4	5	B160
B530	Archive Studies I	C	2	2	4	2	—
B540	World Literature II	C	2	—	2	3	—
B550	Publishing	C	—	3	3	4	B230
B560	Library Management	C	2	2	4	4	—
B570	Information Sources in the Social Sciences	C	—	3	3	3	B210
B580	English Specific Terminology	C	2	2	4	2	—
B591	French Specific Terminology	CE	2	2	4	2	—
B592	German Specific Terminology						
Total			14	18	32	30	

6th semester

CODE	COURSE	C/CE	LECT	LAB	TOTAL	ECTS CREDITS	PREQ
			HOURS PER WEEK				
B610	Research Methods for Librarians	C	2	2	4	5	—
B620	Communications and Networks	C	—	4	4	5	—
B630	Archive Studies II	C	1	2	3	2	B530
B640	Information Sources in Sciences and Technology	C	—	4	4	5	B220
B650	Information Source in the Humanities	C	—	4	4	5	B210
B660	Library Preservation and Conservation	C	—	3	3	3	—
B670	Descriptive Cataloguing IV	C	—	4	4	5	B410
Total			3	23	26	30	

7th semester

CODE	COURSE	C/CE	LECT	LAB	TOTAL	ECTS CREDITS	PREQ
			HOURS PER WEEK				
B710	History of Greek Civilization	C	4	—	4	2	—
B720	Developmental Psychology	C	3	—	3	3	—
B730	Information Systems Analysis	C	2	1	3	5	—
B740	Children’s Literature	C	3	—	3	3	—
B750	Public Relations	C	3	—	3	3	—
B760	Internet Searching	C	—	2	2	5	—
B770	Library Automation II	C	—	3	3	4	B460
B780	Seminar	C	—	3	3	5	—
Total			15	9	24	30	

8th semester

CODE	COURSE	C/CE	LECT	LAB	TOTAL PERIOD	ECTS CREDITS
B810	Diploma Thesis	C	—	—	6 months	20
B820	Practical Training	C	—	—	6 months	10
Total						30

C : Compulsory
CE : Compulsory Elective
LECT : Lecture

LAB : Laboratory
ECTS : European Credit Transfer System
PREQ : Prerequisite

DEPARTMENT OF MARKETING & ADVERTISING

Graduates of this Department are professionally involved with the study, research and application of technology on contemporary and specialized areas of marketing and advertising such as market surveys, sales increase, advertisement and promotion.

PROGRAMME OF STUDIES

1st semester

CODE	COURSE	C/CE	LECT	LAB	TOTAL	ECTS CREDITS	PREQ
			HOURS PER WEEK				
EΔ110	Introduction to Marketing	C	5	—	5	7	—
EΔ120	Management	C	5	—	5	6	—
EΔ130	Principles of Economics I	C	4	—	4	5	—
EΔ140	Mathematics	C	4	—	4	5	—
EΔ150	Introduction to Computers	C	1	2	3	3	—
EΔ161	Introduction to Civil Law	CE	3	—	3	4	—
EΔ162	Introduction to Labour Law						
Total			22	2	24	30	

OPTIONAL COURSE FOR THIS SEMESTER —*Obligatory one of the two without credits:*

- Introduction to Systems Theory
- English for Marketing I (for Erasmus students 2 ECTS credits)

2nd semester

CODE	COURSE	C/CE	LECT	LAB	TOTAL	ECTS CREDITS	PREQ
			HOURS PER WEEK				
EΔ210	Marketing Mix	C	5	—	5	7	—
EΔ220	Statistics	C	4	—	4	6	—
EΔ230	Principles of Economics II	C	4	—	4	5	—
EΔ240	Financial Accounting	C	2	2	4	5	—
EΔ250	Financial Management	C	3	—	3	4	—
EΔ260	Computer Programming	C	2	2	4	3	—
Total			20	4	24	30	

OPTIONAL COURSE FOR THIS SEMESTER —*Obligatory one of the two without credits:*

- Introduction to Sociology
- English for Marketing II (for Erasmus students 2 ECTS credits)

3rd semester

CODE	COURSE	C/CE	LECT	LAB	TOTAL	ECTS CREDITS	PREQ
			HOURS PER WEEK				
EΔ310	Business Communication	C	5	—	5	7	—
EΔ320	Consumer Behaviour	C	4	—	4	6	—
EΔ330	Industrial Marketing	C	4	—	4	5	—
EΔ340	Public Relations	C	4	—	4	5	—
EΔ350	Data Processing	C	1	2	3	4	—
EΔ361	Introduction to Commercial Law	CE	4	—	4	3	—
EΔ362	Advertising and Consumer Protection Law						
Total			22	2	24	30	

OPTIONAL COURSE FOR THIS SEMESTER –Obligatory one of the two without credits:

- Greek Economy
- English for Advertising (for Erasmus students 2 ECTS credits)

4th semester

CODE	COURSE	C/CE	LECT	LAB	TOTAL	ECTS CREDITS	PREQ
			HOURS PER WEEK				
EΔ410	Principles of Advertising	C	3	1	4	6	—
EΔ420	Retail Marketing	C	5	—	5	6	EΔ210
EΔ430	Personnel Management	C	4	—	4	5	—
EΔ440	Marketing Research	C	4	—	4	5	EΔ220
EΔ450	Sales Management	C	2	2	4	5	—
EΔ460	Dynamic Databases	C	1	2	3	3	—
Total			19	5	24	30	

OPTIONAL COURSE FOR THIS SEMESTER –Obligatory one of the two without credits:

- Introduction to Psychology
- English for Marketing Communications (for Erasmus students 2 ECTS credits)

5th semester

CODE	COURSE	C/CE	LECT	LAB	TOTAL	ECTS CREDITS	PREQ
			HOURS PER WEEK				
EΔ510	Advertising Campaign Planning I	C	2	2	4	5	EΔ410
EΔ520	Marketing Research Applications	C	2	2	4	5	EΔ440
EΔ530	Data Analysis	C	2	2	4	5	—
EΔ540	Services and Banks Marketing Course Group: Sales Specialization	C	4	—	4	5	—
EΔ550	Selling Methods	C	2	2	4	5	—
EΔ560	Selling in Services Course Group: Advertising Specialization	C	4	—	4	5	—
EΔ551	Advertising Messages Analysis	C	4	—	4	5	—
EΔ561	Press and Electronic Advertising	C	2	2	4	5	—
Total			16	8	24	30	

OPTIONAL COURSE FOR THIS SEMESTER —*Obligatory one of the two without credits:*

- Feasibility Studies
- Tourism Marketing

6th semester

CODE	COURSE	C/CE	LECT	LAB	TOTAL	ECTS CREDITS	PREQ
			HOURS PER WEEK				
EΔ610	Marketing Strategy	C	2	2	4	6	—
EΔ620	Marketing Applications with Computers	C	2	2	4	5	EΔ440
EΔ630	International Marketing	C	5	—	5	5	—
Course Group: Sales Specialization							
EΔ640	Industrial Sales	C	5	—	5	7	—
EΔ650	Insurance Marketing	C	5	—	5	7	—
Total			19	4	23	30	
Course Group: Advertising Specialization							
EΔ641	Advertising Campaign Planning II	C	5	—	5	7	—
EΔ651	Modern Technology (Multimedia)	C	1	4	5	7	—
Total			15	8	23	30	

OPTIONAL COURSE FOR THIS SEMESTER —*Obligatory one of the two without credits:*

- Feasibility Studies
- Tourism Marketing

7th semester

CODE	COURSE	C/CE	LECT	LAB	TOTAL	ECTS CREDITS	PREQ
			HOURS PER WEEK				
EΔ710	Marketing Management	C	4	—	4	5	EΔ610
EΔ720	Technical Analysis of Financial Products	C	2	2	4	5	—
EΔ730	Graduates Seminar	C	4	—	4	6	—
Course Group: Sales Specialization							
EΔ740	Retail Sales Methodology	C	3	2	5	7	EΔ420
EΔ750	E-commerce Marketing	C	3	2	5	7	—
Total			16	6	22	30	
Course Group: Advertising Specialization							
EΔ741	Creativity in Advertising	C	1	4	5	7	EΔ510
EΔ751	Advertising Campaign Presentation	C	3	2	5	7	—
Total			14	8	22	30	

OPTIONAL COURSE FOR THIS SEMESTER —*Obligatory one of the two without credits:*

- English Multicultural Management (for Erasmus students 2 ECTS credits)
- Direct Marketing

8th semester

CODE	COURSE	C/CE	LECT	LAB	TOTAL PERIOD	ECTS CREDITS
EΔ810	Diploma Thesis	C	—	—	6 months	20
EΔ820	Practical Training	C	—	—	6 months	10
Total						30

C : Compulsory
CE : Compulsory Elective
LECT : Lecture

LAB : Laboratory
ECTS : European Credit Transfer System
PREQ : Prerequisite



DEPARTMENT OF TOURIST INDUSTRY

Graduates of this Department deal professionally with the study, research and application of contemporary technology on tourism economy and specifically with the production and supply of tourism goods and services as well as administration in various tourism units and travel agencies.

School of Business Administration & Economics

PROGRAMME OF STUDIES

1st semester

CODE	COURSE	C/CE	LECT	LAB	TOTAL	ECTS CREDITS	PREQ
			HOURS PER WEEK				
T110	Principles of Economics I	C	3	—	3	4	—
T120	Introduction to Tourism	C	2	—	2	2,5	—
T130	Introduction to Computers	C	2	3	5	4	—
T140	Financial Mathematics	C	4	—	4	5	—
T150	Labour Law	C	2	—	2	2,5	—
T160	Principles of Accounting	C	4	—	4	5	—
T170	Tourism Business Management	C	6	—	6	7	—
Total			23	3	26	30	

2nd semester

CODE	COURSE	C/CE	LECT	LAB	TOTAL	ECTS CREDITS	PREQ
			HOURS PER WEEK				
T210	Principles of Economics II	C	3	—	3	4,5	—
T220	Commercial Law	C	3	—	3	4,5	—
T230	Commercial Corporate Accounting	C	4	—	4	6	T160
T240	Housekeeping Management	C	2	—	2	3	—
T250	Introduction to Professional Catering	C	1	2	3	2,5	—
T260	Communication in Tourism Enterprises I	C	2	—	2	1,5	—
T270	English I	C	4	—	4	4	—
T281	French I	CE	4	—	4	4	—
T282	German I						
T283	Italian I						
Total			23	2	25	30	

3rd semester

CODE	COURSE	C/CE	LECT	LAB	TOTAL	ECTS CREDITS	PREQ
			HOURS PER WEEK				
T310	Labour Relations	C	3	—	3	4,5	—
T320	Business Statistics	C	4	—	4	6	—
T330	Tourism Economy	C	3	—	3	4,5	T110
T340	Mass Food Proceession	C	5	—	5	3	—
T350	Bar-Beverages-Oenology	C	2	2	4	4	—
T360	English II	C	4	—	4	4	—
T371	French II	CE	4	—	4	4	—
T372	German II						
T373	Italian II						
Total			25	2	27	30	

4th semester

CODE	COURSE	C/CE	LECT	LAB	TOTAL	ECTS CREDITS	PREQ
			HOURS PER WEEK				
T410	Principles of Tourism Marketing	C	4	—	4	4,5	—
T420	Restaurant Management and Techniques	C	2	2	4	3,5	T250 T340
T430	Human Resource Management	C	3	—	3	3,5	—
T440	Knowledge in Merchandise and Purchasing	C	3	—	3	3,5	—
T450	Business Finance	C	4	—	4	4,5	—
T460	Front Office Management	C	2	2	4	3,5	—
T470	English III	C	4	—	4	4	T270
T481	French III	CE	4	—	4	4	—
T482	German III						
T483	Italian III						
Total			26	4	30	30	

5th semester

CODE	COURSE	C/CE	LECT	LAB	TOTAL	ECTS CREDITS	PREQ
			HOURS PER WEEK				
T510	Hotel Marketing	C	4	—	4	5	T410
T520	Tourism Marketing Research	C	3	—	3	2,5	—
T530	Tourism Legislation	C	4	—	4	5	—
T540	Tourism Geography of Greece	C	2	—	2	2,5	—
T550	Front Office Accounting	C	5	—	5	2,5	T460
T560	Cost Accounting	C	4	—	4	5	T440
T570	Architecture-Hotel Equipment	C	2	—	2	2,5	—
T580	English IV	C	3	—	3	2,5	T470
T591	French IV	CE	4	—	4	4	—
T592	German IV						
T593	Italian IV						
Total			30		30	30	

6th semester

CODE	COURSE	C/CE	LECT	LAB	TOTAL	ECTS CREDITS	PREQ
			HOURS PER WEEK				
T610	Communication in Tourism Enterprises II	C	3	—	3	4	—
T620	Hotel Software	C	4	—	4	2	—
T630	Tourism Sociology	C	2	—	2	3	—
T640	Conventions Management	C	3	—	3	4	—
T650	Travel Guides	C	2	—	2	1,5	—
T660	Group Travel Management	C	2	2	4	3,5	—
T670	Hotel Animation	C	2	—	2	3	—
T680	Pricing Control	C	3	—	3	4	T440 T560
T690	English V	C	3	—	3	2,5	—
T601	French V	CE	4	—	4	4	—
T602	German V						
T603	Italian V						
Total			27	2	29	30	

7th semester

CODE	COURSE	C/CE	LECT	LAB	TOTAL	ECTS CREDITS	PREQ
			HOURS PER WEEK				
T710	Hotel Maintenance	C	2	—	2	2,5	—
T720	Tourism Policy	C	3	—	3	3,5	T120
T730	Tourism Advertising	C	3	—	3	3,5	—
T740	Public Relations for Tourism Enterprises	C	3	—	3	3,5	—
T750	International Tourism Geography	C	2	—	2	2,5	—
T760	Computer Reservation Systems	C	2	2	4	3,5	—
T770	Tourism Package	C	2	—	2	1,5	—
T780	Ticketing	C	2	2	4	3,5	—
T790	Tourism Psychology	C	3	—	3	3,5	—
T700	Graduates' Seminar	C	3	—	3	2,5	—
Total			25	4	29	30	

8th semester

CODE	COURSE	C/CE	LECT	LAB	TOTAL PERIOD	ECTS CREDITS
T810	Diploma Thesis	C	-	-	6 months	20
T820	Practical Training	C			6 months	10
Total						30

OPTIONAL COURSES FOR THIS DEPARTMENT

Russian Language
Management Information Systems
Heritage Tourism and Museum Management (in English)
Lodging Management (in English)
Hotel Program FIDELIO (in English)
Sustainable Tourism Development (in English)

C : Compulsory
CE : Compulsory Elective
LECT : Lecture

LAB : Laboratory
ECTS : European Credit Transfer System
PREQ : Prerequisite





PROGRAMME OF STUDIES

School of Food Technology and Nutrition



ΠΡΟΠΤΥΧΙΑΚΑ ΠΡΟΓΡΑΜΜΑΤΑ ΣΠΟΥΔΩΝ ΤΟΥ ΑΤΕΙ ΘΕΣΣΑΛΟΝΙΚΗΣ

ΕΠΕΑΕΚ Μέτρο 2.2 Ενέργεια 2.2.2 Κατηγορία Πράξεων 2.2.2.α



ΥΠΟΥΡΓΕΙΟ ΕΘΝΙΚΗΣ ΠΑΙΔΕΙΑΣ ΚΑΙ ΘΡΗΣΚΕΥΜΑΤΩΝ
ΕΙΔΙΚΗ ΥΠΗΡΕΣΙΑ ΔΙΑΧΕΙΡΙΣΗΣ ΕΠΕΑΕΚ

ΕΥΡΩΠΑΪΚΗ ΕΝΩΣΗ
ΣΥΓΧΡΗΜΑΤΟΔΟΤΗΣΗ
ΕΥΡΩΠΑΪΚΟ ΚΟΙΝΩΝΙΚΟ ΤΑΜΕΙΟ



Η ΠΑΙΔΕΙΑ ΣΤΗΝ ΚΟΡΥΦΗ
Επιχειρησιακό Πρόγραμμα
Εκπαίδευσης και Αρχικής
Επαγγελματικής Κατάρτισης

DEPARTMENT OF FOOD TECHNOLOGY

Graduates of this Department are trained on every aspect concerning the fields of Food Science and Technology. This is the discipline in which the biological and physical sciences and engineering are used to study the nature of foods, the causes of their deterioration and the principles underlying food processing, preservation, control of quality and safety, packaging, distribution and use of safe, nutritious and wholesome food.

PROGRAM OF STUDIES

1st semester

CODE	COURSE	C/CE	LECT	LAB	TOTAL	ECTS CREDITS	PREQ
			HOURS PER WEEK				
TP110	Mathematics I	C	3	—	3	4.5	—
TP120	Physics	C	2	2	4	5	—
TP130	General & Inorganic Chemistry	C	3	3	6	6	—
TP140	Organic Chemistry	C	2	3	5	6	—
TP150	Biology	C	2	—	2	4.5	—
TP160	Informatics I	C	—	3	3	2	—
Total			12	11	23	28	

2nd semester

CODE	COURSE	C/CE	LECT	LAB	TOTAL	ECTS CREDITS	PREQ
			HOURS PER WEEK				
TP210	Mathematics II	C	3	—	3	4.5	—
TP220	Analytical Chemistry	C	2	3	5	5.5	—
TP230	General Microbiology	C	3	4	7	9	—
TP240	Food Engineering I	C	3	3	6	6	TP110
TP250	Physical Chemistry of Foods	C	3	—	3	5	TP130
TP260	Informatics II	C	—	3	3	2	—
Total			14	13	27	32	

3rd semester

CODE	COURSE	C/CE	LECT	LAB	TOTAL	ECTS CREDITS	PREQ
			HOURS PER WEEK				
TP310	Food Biochemistry	C	2	3	5	6	TP140
TP320	Food Microbiology	C	2	5	7	7	TP230
TP330	Food Engineering II	C	3	3	6	7	—
TP340	Food Processing I	C	3	3	6	7	—
TP350	Statistics for Food Technologists	C	2	2	4	5	—
Total			12	16	28	32	

4th semester

CODE	COURSE	C/CE	LECT	LAB	TOTAL	ECTS CREDITS	PREQ
			HOURS PER WEEK				
TP410	Food Analysis	C	1	3	4	4.5	TP220
TP420	Food Processing II	C	3	3	6	7	—
TP430	Food Chemistry	C	3	3	6	7	TP140
TP440	Food Biotechnology	C	1	3	4	4	—
TP450	Quality Systems	C	2	3	5	5.5	—
Total			10	15	25	28	

5th semester

CODE	COURSE	C/CE	LECT	LAB	TOTAL	ECTS CREDITS	PREQ
			HOURS PER WEEK				
TP510	Technology & Quality Control of Olive Oil & Lipid Products	C	3	3	6	7.5	—
TP520	Technology & Quality Control of Fruits & Vegetables	C	3	3	6	7.5	—
TP530	Technology & Quality Control of Milk & Dairy Products	C	3	3	6	7.5	—
TP540	Instrumental Analysis	C	1	3	4	4	—
TP550	Nutrition & Nutritional Value of Foods	C	2	—	2	4	—
Total			12	12	24	30.5	

6th semester

CODE	COURSE	C/CE	LECT	LAB	TOTAL	ECTS CREDITS	PREQ
			HOURS PER WEEK				
TP610	Technology & Quality Control of Cereals	C	3	3	6	7.5	—
TP620	Technology & Quality Control of Fish & Marine Products	C	3	3	6	7.5	—
TP630	Technology & Quality Control of Meat Products	C	3	3	6	7.5	—
TP640	Industrial Management	C	2	—	2	3.5	—
TP650	Marketing of Foods	C	2	—	2	3.5	—
Total			13	9	22	29.5	

7th semester

CODE	COURSE	C/CE	LECT	LAB	TOTAL	ECTS CREDITS	PREQ
			HOURS PER WEEK				
TP710	Food Packaging	C	2	2	4	4.5	—
TP720	Environmental Protection & By-Product Utilization	C	2	—	2	3.5	—
TP730	Industrial Safety & Hygiene	C	3	—	3	4.5	—
TP740	Design & Planning Food Industrial Plants	C	2	—	2	3.5	TP420
TP750	Seminar	C	2	—	2	3.5	
*	See the table A*	CE	1 or 2	3 or 2	4	3.5	—
*	See the table B**	CE	2	—	2	3.5	—
*	See the table B**	CE	2	—	2	3.5	—
Total			16 or 17	5 or 4	21	30	

8th semester

CODE	COURSE	C/CE	LECT	LAB	TOTAL PERIOD	ECTS CREDITS
TP810	Diploma Thesis	C	—	—	6 months	20
TP820	Practical Training	C	—	—	6 months	10
Total						30

Group A From this group, students must select at least one (1) COURSE

CODE	COURSE	C/CE	LECT	LAB	TOTAL	ECTS CREDITS	PREQ
			HOURS PER WEEK				
TP401	Statistical Process Control	CE	1	3	4	3.5	—
TP402	Physical Properties of Foods	CE	2	2	4	3.5	—
TP403	Water Technology & Waste Disposal	CE	1	3	4	3.5	—
TP404	Wine Technology	CE	1	3	4	3.5	—
TP405	Technical English	CE	4	—	4	3.5	—

Group B From this group, students must select at least two (2) COURSES

CODE	COURSE	C/CE	LECT	LAB	TOTAL	ECTS CREDITS	PREQ
			HOURS PER WEEK				
TP201	Cost Analysis	CE	2	—	2	3.5	—
TP202	Introduction to Accountancy	CE	2	—	2	3.5	—
TP203	Human Relations at Work	CE	2	—	2	3.5	—
TP204	Food Legislation	CE	2	—	2	3.5	—
TP205	Professional Ethics	CE	2	—	2	3.5	—

OPTIONAL COURSES

English I	Computer Applications in Food Technology
English II	Computational Methods in Food Processing
English III	Writing Technical Reports

C : Compulsory
CE : Compulsory Elective
LECT : Lecture

LAB : Laboratory
ECTS : European Credit Transfer System
PREQ : Prerequisite

DEPARTMENT OF NUTRITION & DIETETICS

Graduates of this Department are entitled to be employed in the following fields:

- Testing of nutritional value of foods
- Food labelling
- Participation in the establishment of new products' standards
- Diet planning and supervision of their application
- Supervision of catering

PROGRAMME OF STUDIES

1st semester

CODE	COURSE	C/CE	LECT	LAB	TOTAL	ECTS CREDITS	PREQ
			HOURS PER WEEK				
Δ110	Mathematics	C	3	—	3	4	—
Δ120	Physics	C	2	—	2	3	—
Δ130	Biology	C	4	—	4	6	—
Δ140	Organic & Inorganic Chemistry	C	3	3	6	7	—
Δ150	Informatics	C	2	3	5	5	—
Δ160	Food Science I	C	3	—	3	5	—
Total			17	6	23	30	

2nd semester

CODE	COURSE	C/CE	LECT	LAB	TOTAL	ECTS CREDITS	PREQ
			HOURS PER WEEK				
Δ210	Analytical Chemistry & Instrumental Analysis	C	3	3	6	7	—
Δ220	Seminar	C	3	—	3	4	—
Δ230	Human Anatomy & Physiology	C	3	3	6	7	Δ130
Δ240	Biochemistry I	C	3	3	6	7	Δ140
Δ250	Introduction to Nutrition & Dietetics	C	3	—	3	5	—
Total			15	9	24	30	

3rd semester

CODE	COURSE	C/CE	LECT	LAB	TOTAL	ECTS CREDITS	PREQ
			HOURS PER WEEK				
Δ310	Biostatistics	C	2	3	5	5	—
Δ320	Microbiology & Food Hygiene	C	3	3	6	7	—
Δ330	Physiology of the Intestinal Tract	C	3	—	3	5	—
Δ340	Biochemistry II	C	3	3	6	7	—
Δ350	Food Science II	C	2	—	2	3	—
Δ361	Nosology	CE	2	—	2	3	—
Δ362	Nutritive Value of Foods after Processing						
Δ363	Foreign Language III						
Total			15	9	24	30	

4th semester

CODE	COURSE	C/CE	LECT	LAB	TOTAL	ECTS CREDITS	PREQ
			HOURS PER WEEK				
Δ410	Principles of Food Preparation	C	3	3	6	7	—
Δ420	Nutrition & Diet Planning in Health I	C	3	3	6	7	—
Δ430	Chemistry & Food Analysis	C	3	3	6	7	Δ210
Δ440	Deontology of Nutritionists & Dieticians	C	3	—	3	5	—
Δ451	Nutrition & Exercise	CE	3	—	3	4	—
Δ452	Novel Foods						
Δ453	Foreign Language IV						
Total			15	9	24	30	

5th semester

CODE	COURSE	C/CE	LECT	LAB	TOTAL	ECTS CREDITS	PREQ
			HOURS PER WEEK				
Δ510	Food Technology & Quality Control	C	3	3	6	7	Δ160
Δ520	Food Toxicology	C	2	—	2	3	—
Δ530	Nutrition & Diet Planning in Health II	C	3	3	6	7	Δ420
Δ540	Clinical Nutrition & Diet Therapy I	C	3	3	6	7	Δ340
Δ550	Foreign Language Terminology	C	3	—	3	4	—
Δ561	Organization & Management of Nutrition Units	CE	2	—	2	2	—
Δ562	Psychology & Nutrition						
Δ563	Sociology & Nutrition						
Total			16	9	25	30	

6th semester

CODE	COURSE	C/CE	LECT	LAB	TOTAL	ECTS CREDITS	PREQ
			HOURS PER WEEK				
Δ610	Nutrition Counseling	C	3	—	3	4	—
Δ620	Nutrition & Sports	C	3	3	6	7	Δ530
Δ630	Clinical Nutrition & Diet Therapy II	C	3	3	6	7	Δ530
Δ640	Research Methods in Nutrition	C	3	—	3	4	—
Δ651	Genetics, Nutrition & Environment	CE	3	—	3	4	—
Δ652	Nutrition & Ergophysiology						
Δ661	Principles of Marketing in Nutrition	CE	3	—	3	4	—
Δ662	Personal Relations						
Δ663	European Economics & Social Politics						
Total			18	6	24	30	

7th semester

CODE	COURSE	C/CE	LECT	LAB	TOTAL	ECTS CREDITS	PREQ
			HOURS PER WEEK				
Δ710	Food Catering	C	3	—	3	4	—
Δ720	Clinical Nutrition & Diet Therapy III	C	3	3	6	7	Δ630
Δ730	Nutrition Education & Health	C	3	—	3	5	—
Δ741	Diet & Obesity	CE	3	—	3	4	—
Δ742	Nutritional Support of Paediatric Patients						
Δ751	Quality Control Systems	CE	3	—	3	5	—
Δ752	Nutrition Pedagogy						
Δ753	Economics & Politics in Nutrition						
Total			18	3	21	30	

8th semester

CODE	COURSE	C/CE	LECT	LAB	TOTAL PERIOD	ECTS CREDITS
Δ810	Diploma Thesis	C	—	—	6 months	20
Δ820	Practical Training	C	—	—	6 months	10
Total						30

OPTIONAL COURSES

Foreign Language I	Interaction of Nutritive Ingredients
Foreign Language II	Biochemical Index of Nutritive Condition
Nutrition in Internet	Nutritional European Habits
Environmental Science	Nutrition of Control Weight

C : Compulsory	LAB : Laboratory
CE : Compulsory Elective	ECTS : European Credit Transfer System
LECT : Lecture	PREQ : Prerequisite



PROGRAMME OF STUDIES

School of Health and Medical Care



ΠΡΟΠΤΥΧΙΑΚΑ ΠΡΟΓΡΑΜΜΑΤΑ ΣΠΟΥΔΩΝ ΤΟΥ ΑΤΕΙ ΘΕΣΣΑΛΟΝΙΚΗΣ

ΕΠΕΑΕΚ Μέτρο 2.2 Ενέργεια 2.2.2 Κατηγορία Πράξεων 2.2.2.α



ΥΠΟΥΡΓΕΙΟ ΕΘΝΙΚΗΣ ΠΑΙΔΕΙΑΣ ΚΑΙ ΘΡΗΣΚΕΥΜΑΤΩΝ
ΕΙΔΙΚΗ ΥΠΗΡΕΣΙΑ ΔΙΑΧΕΙΡΙΣΗΣ ΕΠΕΑΕΚ



ΕΥΡΩΠΑΪΚΗ ΕΝΩΣΗ
ΣΥΓΧΡΗΜΑΤΟΔΟΤΗΣΗ
ΕΥΡΩΠΑΪΚΟ ΚΟΙΝΩΝΙΚΟ ΤΑΜΕΙΟ



Η ΠΑΙΔΕΙΑ ΣΤΗΝ ΚΟΡΥΦΗ
Επιχειρησιακό Πρόγραμμα
Εκπαίδευσης και Αρχικής
Επαγγελματικής Κατάρτισης

DEPARTMENT OF AESTHETICS & COSMETOLOGY

Graduates of this Department are entitled to employment in the theatre, cinema and television, in enterprises which manufacture or sell cosmetics, in hospitals and in cosmetics' laboratories.

PROGRAMME OF STUDIES

1st semester

CODE	COURSE	C/CE	LECT	LAB	TOTAL	ECTS CREDITS	PREQ
			HOURS PER WEEK				
AI110	Physiology	C	3	1	4	5.5	—
AI120	Anatomy	C	3	2	5	6	—
AI130	Dermatology I	C	2	2	4	6	—
AI140	Inorganic-Organic Chemistry	C	2	1	3	5	—
AI150	Special Topics in Physics	C	2	2	4	4.5	—
AI160	English	C	1	1	2	3	—
AI170	French	C	1	1	2	3	—
Total			13	9	22	30	

2nd semester

CODE	COURSE	C/CE	LECT	LAB	TOTAL	ECTS CREDITS	PREQ
			HOURS PER WEEK				
AI210	Aesthetics of the face I	C	2	4	6	6	—
AI220	Morphology and peculiar shapes of the face	C	2	4	6	6	—
AI230	Dermatology II	C	2	1	3	4.5	AI130
AI240	Cosmetology I	C	2	3	5	6	—
AI250	Cellular and development Biology	C	2	1	3	4.5	—
AI260	English Terminology	C	2	—	2	3	—
AI270	French Terminology	C	2	—	2	3	—
Total			12	13	25	30	

3rd semester

CODE	COURSE	C/CE	LECT	LAB	TOTAL	ECTS CREDITS	PREQ
			HOURS PER WEEK				
AI310	Aesthetics of the face II	C	2	4	6	7	AI210
AI320	The colour in Make-up	C	2	4	6	7	AI220
AI330	Dermatology III	C	2	1	3	5	AI230
AI340	Cosmetology II	C	2	3	5	5	AI240
AI350	Biochemistry	C	2	—	2	3	—
AI360	Nosology	C	2	—	2	3	—
Total			12	12	24	30	

4th semester

CODE	COURSE	C/CE	LECT	LAB	TOTAL	ECTS CREDITS	PREQ
			HOURS PER WEEK				
AI410	Aesthetics of the face III	C	2	4	6	7	AI310
AI420	Endocrinology	C	2	—	2	4	—
AI430	Cosmetology III	C	2	3	5	6	AI340
AI440	Dermatology IV	C	2	2	4	5	AI330
AI450	First Aids	C	1	2	3	4	—
AI461	Aesthetic Surgery	CE	2	—	2	4	—
AI462	Psychology and Human Relations						
Total			11	11	22	30	

5th semester

CODE	COURSE	C/CE	LECT	LAB	TOTAL	ECTS CREDITS	PREQ
			HOURS PER WEEK				
AI510	Aesthetics of the Body I	C	2	4	6	7	—
AI520	Make-up of Photography-TV-Movies	C	1	4	5	6	AI320
AI530	Methods of Depillation I	C	2	4	6	7	—
AI540	Dietetics and Nutrition	C	2	—	2	3	—
AI550	Deontology of Profession	C	2	—	2	3	—
AI561	Laser in Aesthetics	CE	2	2	4	4	—
AI562	Kinesiology						
Total			8	12	20	30	

6th semester

CODE	COURSE	C/CE	LECT	LAB	TOTAL	ECTS CREDITS	PREQ
			HOURS PER WEEK				
AI610	Aesthetics of the Body II	C	2	4	6	7	AI510
AI620	Theatrical Maquillage	C	2	4	6	7	—
AI630	Methods of Depillation II	C	2	4	6	7	AI530
AI640	Organization of the Lab	C	2	—	2	5	—
AI651	Aesthetic Gymnastics	CE	1	2	3	4	—
AI652	Computers PC						
Total			11	11	22	30	

7th semester

CODE	COURSE	C/CE	LECT	LAB	TOTAL	ECTS CREDITS	PREQ
			HOURS PER WEEK				
AI710	Aesthetics of the Body III	C	2	4	6	8	AI610
AI720	Methods of Depillation III	C	2	4	6	8	AI630
AI730	Graduate's Seminar	C	—	2	2	3	AI620
AI740	Techniques of Additional Materials	C	2	4	6	8	—
AI751	Marketing	CE	2	—	2	3	—
AI752	Public Hygiene						
Total			8	14	22	30	

8th semester

CODE	COURSE	C/CE	LECT	LAB	TOTAL PERIOD	ECTS CREDITS
AI810	Diploma Thesis	C	—	—	6 months	20
AI820	Internship	C	—	—	6 months	10
Total						30

AELH : Administration, Economics, Legislation, Humanities
Compulsory Elective Courses

C : Compulsory

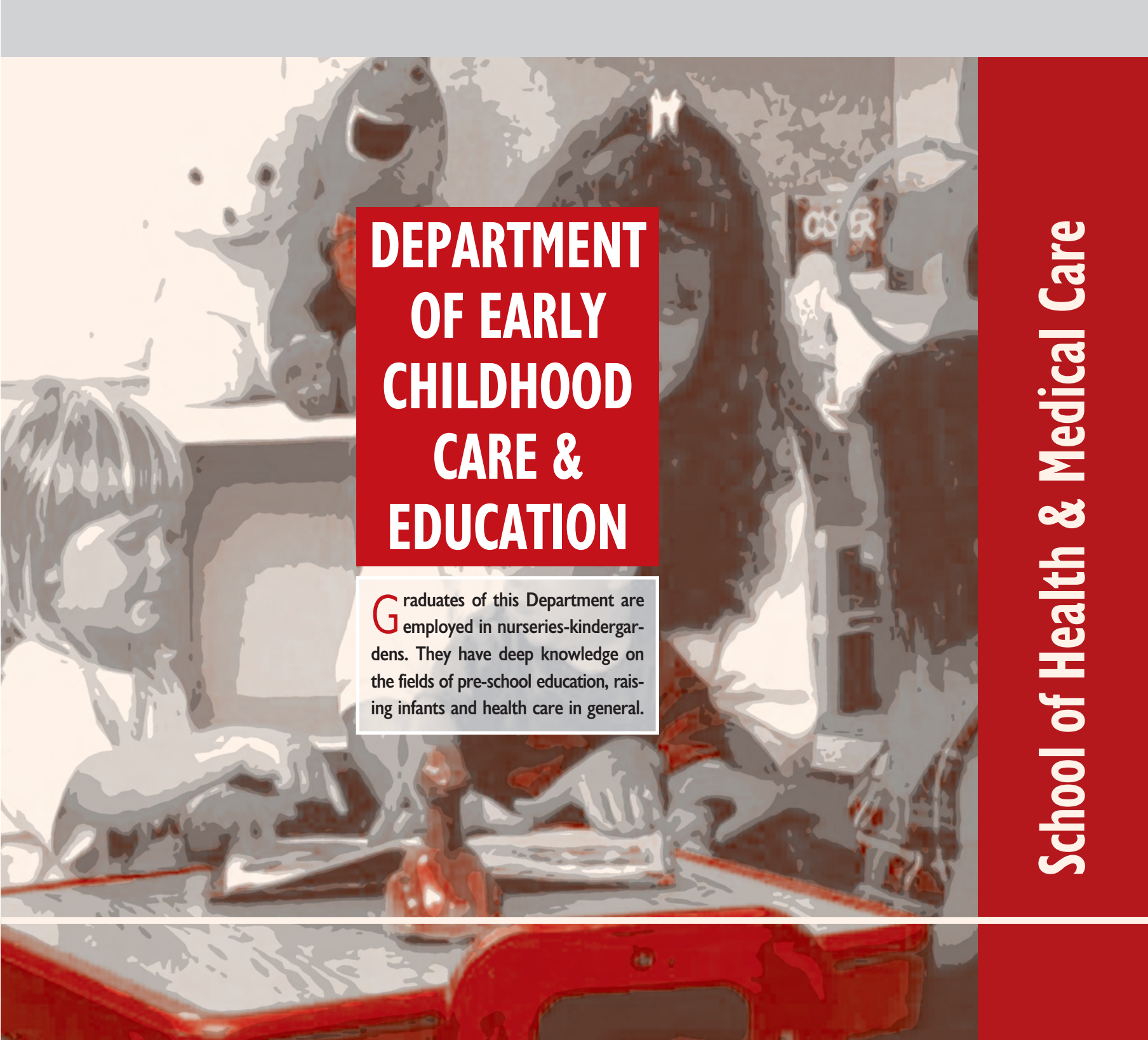
CE : Compulsory Elective

LECT : Lecture

LAB : Laboratory

ECTS : European Credit Transfer System

PREQ : Prerequisite



DEPARTMENT OF EARLY CHILDHOOD CARE & EDUCATION

Graduates of this Department are employed in nurseries-kindergartens. They have deep knowledge on the fields of pre-school education, raising infants and health care in general.

School of Health & Medical Care

PROGRAMME OF STUDIES

1st semester

CODE	COURSE	C/CE	LECT	LAB	TOTAL	ECTS CREDITS	PREQ
			HOURS PER WEEK				
BP110	Baby and Toddler Care I	C	2	4	6	6	—
BP120	Introduction to Science of Education	C	3	—	3	6	—
BP130	Introduction to Psychology	C	3	—	3	6	—
BP140	Elements of Anatomy-Physiology	C	2	—	2	3	—
BP150	Modern Greek Language	C	3	—	3	4	—
BP160	Preschool Education and PC	C	2	3	5	5	—
Total			15	7	22	30	

OPTIONAL COURSES FOR THIS SEMESTER:

- Foreign Language-Terminology
- Dietetics

2nd semester

CODE	COURSE	C/CE	LECT	LAB	TOTAL	ECTS CREDITS	PREQ
			HOURS PER WEEK				
BP210	Baby and Toddler Care II	C	2	6	8	7	—
BP220	Preschool Paedagogy	C	3	—	3	5	—
BP230	Developmental Psychology of Early Childhood	C	3	—	3	5	—
BP240	Introduction to Children’s Literature	C	3	—	3	5	—
BP250	Music Education I	C	2	1	3	4	—
BP260	Elements of Law and Justice I	C	2	—	2	4	—
Total			15	7	22	30	

OPTIONAL COURSES FOR THIS SEMESTER:

- Foreign Language-Terminology
- Preschool Education and PC

3rd semester

CODE	COURSE	C/CE	LECT	LAB	TOTAL	ECTS CREDITS	PREQ
			HOURS PER WEEK				
BP310	Baby and Toddler Care III	C	2	6	8	7	—
BP320	Developmental Psychology of Infancy and Toddlerhood	C	3	—	3	5.5	—
BP330	Theory and Methodology of Preschool Education I	C	3	—	3	5.5	—
BP340	Children’s Literature	C	2	—	2	4	—
BP350	Music and Education II	C	2	2	4	4	—
BP360	Fine Arts I	C	2	2	4	4	—
Total			14	10	24	30	

OPTIONAL COURSES FOR THIS SEMESTER:

- Foreign Language-Terminology
- Preschool Education and PC

4th semester

CODE	COURSE	C/CE	LECT	LAB	TOTAL	ECTS CREDITS	PREQ
			HOURS PER WEEK				
BP410	Theory and Methodology of Preschool Education II	C	2	6	8	7	—
BP420	Educational Psychology	C	3	—	3	5	—
BP430	Music and Movement Education I	C	2	2	4	4.5	—
BP440	Fine Arts II	C	2	2	4	4.5	—
BP451	Introduction to Sociology	CE	2	—	2	4	—
BP452	Statistics						
BP461	Administration of Children’s Centres	CE	3	—	3	5	—
BP462	Elements of Law and Justice						
Total			14	10	24	30	

OPTIONAL COURSES FOR THIS SEMESTER:

- Foreign Language-Terminology
- Preschool Education and PC

5th semester

CODE	COURSE	C/CE	LECT	LAB	TOTAL	ECTS CREDITS	PREQ
			HOURS PER WEEK				
BP510	Baby and Toddler Care IV	C	2	5	7	7	—
BP520	Elements of Economy and Management in Baby/Infant Centres	C	2	—	2	4	—
BP531	Current Trends in Preschool Paedagogy	CE	2	5	7	7	—
BP532	Comperative Education						
BP541	Music and Movement Education II	CE	2	2	4	4.5	—
BP542	Role Play						
BP551	Paediatrics	CE	2	—	2	4	—
BP552	Developmental Paediatrics						
BP561	Intercultural Education	CE	2	—	2	3.5	—
BP562	Social Welfare I						
Total			12	12	24	30	

OPTIONAL COURSES FOR THIS SEMESTER:

- First Aids
- Midwifery

6th semester

CODE	COURSE	C/CE	LECT	LAB	TOTAL	ECTS CREDITS	PREQ
			HOURS PER WEEK				
BP610	Baby and Toddler Care V	C	2	5	7	7.5	—
BP620	Environmental Education	C	2	5	7	7.5	—
BP631	Clinical Psychology	CE	3	—	3	5	—
BP632	Social Psychology						
BP641	Elements of Sociology of Education	CE	3	—	3	5	—
BP642	Social Welfare II						
BP651	Puppet Theatre	CE	2	2	4	5	—
BP652	Educational Materials						
Total			12	12	24	30	

OPTIONAL COURSES FOR THIS SEMESTER:

- Elements of Child-psychiatry
- Non Verbal Communication

7th semester

CODE	COURSE	C/CE	LECT	LAB	TOTAL	ECTS CREDITS	PREQ
			HOURS PER WEEK				
BP710	Counseling Psychology	C	3	—	3	5	—
BP720	Social Paedagogy	C	3	6	9	9	—
BP730	Research Methodology	C	3	1	4	6	—
BP741	Aesthetic Education-History of Arts	CE	3	—	3	5	—
BP742	Hygiene						
BP751	Special Education	CE	3	—	3	5	—
BP752	Neurophysiology						
Total			15	7	22	30	

OPTIONAL COURSES FOR THIS SEMESTER: Seminar

8th semester

CODE	COURSE	C/CE	LECT	LAB	TOTAL PERIOD	ECTS CREDITS
BP810	Diploma Thesis	C	—	—	6 months	20
BP820	Internship	C	—	—	6 months	10
Total						30

PREREQUISITIVE COURSES for INTERNSHIP are:

Baby and Toddler Care I

Theory and Methodology of Preschool Education II

Baby and Toddler Care II

Introduction to Psychology

Introduction to Science of Education

Developmental Psychology of Early Childhood

Prescholl Paedagogy

Elements of Economy and Management in Baby/Infant Centres

C : Compulsory**LAB** : Laboratory**CE** : Compulsory Elective**ECTS** : European Credit Transfer System**LECT** : Lecture**PREQ** : Prerequisite

DEPARTMENT OF MEDICAL LABORATORY STUDIES

Graduates of this Department are in charge of medical laboratories in the public and private sector: i.e microbiology, biochemistry, haematology, histopathology, cytology, general immunology, virology, radioisotopes, laboratories, as well as in blood banks.

PROGRAMME OF STUDIES

1st semester

CODE	COURSE	C/CE	LECT	LAB	TOTAL	ECTS CREDITS	PREQ
			HOURS PER WEEK				
TIE110	Medical Physics-Nuclear Medicine	C	3	2	5	7	—
TIE120	Research Design and Statistics	C	2	2	4	6	—
TIE130	General Microbiology	C	2	3	5	6	—
TIE140	Laboratory Safety	C	2	—	2	3	—
TIE150	Applications of Information Technology	C	2	4	6	8	—
Total			11	11	22	30	

2nd semester

CODE	COURSE	C/CE	LECT	LAB	TOTAL	ECTS CREDITS	PREQ
			HOURS PER WEEK				
TIE210	Biochemistry	C	3	3	6	8	—
TIE220	Elementary Biology-Genetics	C	2	3	5	6	—
TIE230	Nutrient Media	C	2	2	4	5	—
TIE240	Internet and Specialized Software	C	2	4	6	8	TIE150
TIE250	Principles of Population Hygiene	C	2	—	2	3	—
Total			11	12	23	30	

3rd semester

CODE	COURSE	C/CE	LECT	LAB	TOTAL	ECTS CREDITS	PREQ
			HOURS PER WEEK				
TIE310	Medical Biotechnology	C	2	3	5	5.5	—
TIE320	Physiology	C	3	2	5	6	—
TIE330	Anatomy	C	3	2	5	6	—
TIE340	Medical Microbiology I	C	2	3	5	5.5	TIE130
TIE350	Laboratory Animals	C	3	—	3	4	—
TIE360	Labour Relations and Deontology	C	2	—	2	3	—
Total			15	10	25	30	

4th semester

CODE	COURSE	C/CE	LECT	LAB	TOTAL	ECTS CREDITS	PREQ
			HOURS PER WEEK				
TIE410	Histology-Embryology	C	2	2	4	5	TIE330
TIE420	Foreign Language-Medical Terminology	C	2	1	3	4.5	—
TIE430	Medical Microbiology II	C	2	3	5	5.5	TIE130
TIE440	Clinical Chemistry I	C	2	3	5	5	—
TIE450	Haematology I	C	2	3	5	5	—
TIE461	Cell-cultures and Laboratory Animals	CE	2	2	4	5	—
TIE462	Pharmacology-Clinical Toxicology						
TIE463	Resistance to Antibiotics-Microbe Sensitivity Control						
Total			12	14	26	30	

5th semester

CODE	COURSE	C/CE	LECT	LAB	TOTAL	ECTS CREDITS	PREQ
			HOURS PER WEEK				
TIE510	General Pathology	C	2	2	4	6	TIE410
TIE520	Blood Specimen Collection	C	—	3	3	3	TIE450
TIE530	Virology	C	2	2	4	5	—
TIE540	Clinical Chemistry II	C	2	3	5	6	TIE440
TIE550	Haematology II	C	2	3	5	5	—
TIE561	Enzymology-Enzyme Engineering	CE	2	3	5	5	—
TIE562	Forensic Medicine						
TIE563	Lab. Study of Lower Respiratory System Infections						
Total			15	10	25	30	

6th semester

CODE	COURSE	C/CE	LECT	LAB	TOTAL	ECTS CREDITS	PREQ
			HOURS PER WEEK				
TIE610	Specialized Pathology I	C	2	3	5	6	TIE410
TIE620	Immunology I	C	2	3	5	5	—
TIE630	Clinical Chemistry III	C	2	3	5	6	TIE440
TIE640	Haematology III	C	2	3	5	5	TIE450 TIE550
TIE650	Mycology	C	2	2	4	5	—
TIE661	Bioethics	CE	2	3	5	5	—
TIE662	Ecotoxicology						
TIE663	Immunology of Infections						
Total			12	14	26	30	

7th semester

CODE	COURSE	C/CE	LECT	LAB	TOTAL	ECTS CREDITS	PREQ
			HOURS PER WEEK				
TIE710	Specialized Pathology II	C	2	3	5	6	TIE410
TIE720	Immunology II	C	2	2	4	5	—
TIE730	Clinical Chemistry IV	C	2	2	4	6	TIE440
TIE740	Parasitology	C	2	3	5	5	—
TIE750	Health Psychology	C	2	—	2	3	—
TIE761	Molecular Diagnostics	CE	2	3	5	5	—
TIE762	Molecular Pathology-Immunohisto-chemistry						
TIE763	Lab. Study of Food Poisoning						
Total			12	13	25	30	

8th semester

CODE	COURSE	C/CE	LECT	LAB	TOTAL PERIOD	ECTS CREDITS
TIE810	Diploma Thesis	C	—	—	6 months	20
TIE820	Internship	C	—	—	6 months	10
Total						30

C : Compulsory
CE : Compulsory Elective
LECT : Lecture

LAB : Laboratory
ECTS : European Credit Transfer System
PREQ : Prerequisite



DEPARTMENT OF MIDWIFERY

Graduates of this Department can be employed in the following sectors: family planning centres, GYN and maternity departments, out-patient departments specialized in infertility, oncology, pre-natal and post-natal care. They can also work in neonate's units or neonate's intensive care units.

School of Health & Medical Care

PROGRAMME OF STUDIES

1st semester

CODE	COURSE	C/CE	LECT	LAB	TOTAL	ECTS CREDITS	PREQ
			HOURS PER WEEK				
M110	Human Anatomy I	C	2	2	4	4	—
M120	Human Physiology I	C	2	1	3	3	—
M130	Nursing I	C	2	10	12	12	—
M140	Midwife’s Code of Practice	C	1	—	1	2	—
M150	Midwife-Nursing Management	C	2	—	2	3	—
M160	Microbiology-Blood Donation	C	2	1	3	4	—
M170	Health Economics	C	1	—	1	2	—
Total			12	14	26	30	

OPTIONAL COURSES FOR THIS SEMESTER:

- Social Hygiene
- Health Psychology

2nd semester

CODE	COURSE	C/CE	LECT	LAB	TOTAL	ECTS CREDITS	PREQ
			HOURS PER WEEK				
M210	Human Anatomy II	C	2	2	4	4	M110
M220	Human Physiology II	C	2	1	3	3	—
M230	Nursing II	C	2	10	12	13	M130
M240	Biochemistry	C	1	—	1	2	—
M250	Nosology	C	2	—	2	3	—
M260	General Pharmacology	C	2	—	2	3	—
M270	Genetics	C	1	—	1	2	—
Total			12	13	25	30	

OPTIONAL COURSES FOR THIS SEMESTER:

- Neurology-Psychiatrics
- Surgery

3rd semester

CODE	COURSE	C/CE	LECT	LAB	TOTAL	ECTS CREDITS	PREQ
			HOURS PER WEEK				
M310	Obstetrics I	C	2	—	2	3	M110
M320	Midwifery Care I	C	2	4	6	8	—
M330	Nursing III	C	2	10	12	10	M230
M340	Special Pharmacology	C	2	—	2	3	M260
M350	Gynaecology I	C	2	—	2	3	—
M360	Paediatrics	C	2	—	2	3	—
Total			12	14	26	30	

OPTIONAL COURSES FOR THIS SEMESTER:

- Informatics
- First Aid

4th semester

CODE	COURSE	C/CE	LECT	LAB	TOTAL	ECTS CREDITS	PREQ
			HOURS PER WEEK				
M410	Obstetrics II	C	2	—	2	3	—
M420	Midwifery Care II	C	2	10	12	11	M320
M430	Gynaecology II- Breast Care	C	2	—	2	3	M350
M440	Gynaecological Nursing I	C	2	10	12	10	—
M450	Neonatology	C	2	—	2	3	—
Total			10	20	30	30	

OPTIONAL COURSES FOR THIS SEMESTER:

- Pathological Anatomy
- Dermatology

5th semester

CODE	COURSE	C/CE	LECT	LAB	TOTAL	ECTS CREDITS	PREQ
			HOURS PER WEEK				
M510	Obstetrics III	C	2	—	2	3	M410
M520	Midwifery Care III	C	2	7	9	8	M420
M530	Psychology	C	2	—	2	3	—
M540	Gynaecological Nursing II	C	2	6	8	8	—
M550	Neonate Nursing	C	2	7	9	8	M450
Total			12	14	26	30	

OPTIONAL COURSES FOR THIS SEMESTER:

- Dietetics
- Biostatics-Biometry

6th semester

CODE	COURSE	C/CE	LECT	LAB	TOTAL	ECTS CREDITS	PREQ
			HOURS PER WEEK				
M610	Obstetrics IV	C	2	—	2	3	M510
M620	Midwifery Care IV	C	2	7	9	8	—
M630	Perinatal Midwifery Care	C	2	6	8	8	—
M640	Community Midwifery Care	C	2	7	9	8	—
M650	Family Planning	C	2	—	2	3	—
Total			10	20	30	30	

OPTIONAL COURSES FOR THIS SEMESTER:

- Biophysics-Actinology
- Foreign Language Terminology

7th semester

CODE	COURSE	C/CE	LECT	LAB	TOTAL	ECTS CREDITS	PREQ
			HOURS PER WEEK				
M710	Midwifery Care in Intensive Neonat Care Unit	C	2	10	12	10	—
M720	Midwifery Care in Psychoprophylactic Preparation of Birth	C	2	10	12	10	—
M730	Midwifery Care in Human Sexuality Training	C	—	—	—	—	—
M740	Midwifery Research	C	2	—	2	3	—
M750	Profession Deontology and Legislation	C	2	—	2	4	—
Total			10	20	30	30	

OPTIONAL COURSES FOR THIS SEMESTER:

- Anaesthesiology
- Nursing Care in Gynaecological Cancer

8th semester

CODE	COURSE	C/CE	LECT	LAB	TOTAL PERIOD	ECTS CREDITS
M810	Diploma Thesis	C	—	—	6 months	20
M820	Internship	C	—	—	6 months	10
Total						30

C : Compulsory
CE : Compulsory Elective
LECT : Lecture

LAB : Laboratory
ECTS : European Credit Transfer System
PREQ : Prerequisite

DEPARTMENT OF NURSING

Graduates of this Department are entitled to employment as members of hospitals and clinics in the private and public sector, in the whole spectrum of medical care provision.

PROGRAMME OF STUDIES

1st semester

CODE	COURSE	C/CE	LECT	LAB	TOTAL	ECTS CREDITS	PREQ
			HOURS PER WEEK				
N110	Introduction to Nursing Science	C	3	2	5	9	—
N120	Anatomy I	C	2	1	3	3	—
N130	Physiology I	C	3	—	3	3	—
N140	Health Psychology	C	2	—	2	4	—
N150	Biology	C	2	—	2	2	—
N160	Microbiology	C	2	—	2	3	—
N170	Health Sociology	C	2	—	2	3	—
N181	History of Nursing	CE	2	—	2	3	—
N182	Biochemistry						
N183	Evolutionary Psychology						
N184	Introduction to Informatics						
Total			18	3	21	30	

2nd semester

CODE	COURSE	C/CE	LECT	LAB	TOTAL	ECTS CREDITS	PREQ
			HOURS PER WEEK				
N210	Anatomy II	C	2	—	2	3	—
N220	Physiology II	C	2	—	2	3	—
N230	Basic Nursing	C	4	4	8	9	—
N240	Biostatistics	C	2	—	2	2	—
N250	Pharmacology	C	2	—	2	2	—
N260	Community Nursing I	C	4	4	8	9	N110
N271	Preparation of Writing Academic Essays and Scientific Articles	CE	2	—	2	2	—
N272	Pathologoanatomics						
N273	Genetics						
Total			18	8	26	30	

3rd semester

CODE	COURSE	C/CE	LECT	LAB	TOTAL	ECTS CREDITS	PREQ
			HOURS PER WEEK				
N310	Surgical Nursing I	C	4	7	11	12	N230
N320	Medical Nursing I	C	4	7	11	12	N230
N330	Surgery	C	2	—	2	2	—
N340	Pathology I	C	2	—	2	2	N210 N220
N351	Nosocomial Infections	CE	2	—	2	2	—
N352	Nursing Theories						
N353	Public Hygiene						
Total			16	14	30	30	

4th semester

CODE	COURSE	C/CE	LECT	LAB	TOTAL	ECTS CREDITS	PREQ
			HOURS PER WEEK				
N410	Surgical Nursing II	C	4	7	11	11	N310
N420	Medical Nursing II	C	4	5	9	10	N320
N430	Dietetics-Nutrition	C	2	—	2	2	—
N440	Pathology II	C	2	—	2	2	N340
N450	Health Informatics	C	2	—	2	2	—
N461	Nursing Diagnosis Approach	CE	2	—	2	3	—
N462	Gerontology						
N463	Health Economics						
N464	Intensive Care Units						
Total			16	14	30	30	

5th semester

CODE	COURSE	C/CE	LECT	LAB	TOTAL	ECTS CREDITS	PREQ
			HOURS PER WEEK				
N510	Paediatrics Midwifery	C	4	12	16	14	N260
N520	Profession Law and Ethics	C	2	—	2	3	—
N530	Paediatrics	C	2	—	2	3	—
N540	Research Methodology in Nursing	C	3	—	3	5	—
N550	Psychiatrics	C	2	—	2	3	—
N561	Radiology-Actinology	CE	2	—	2	2	—
N562	Cardiology Nursing						
N563	Ongology Nursing						
N564	Consulting Nursing						
Total			15	12	27	30	

6th semester

CODE	COURSE	C/CE	LECT	LAB	TOTAL	ECTS CREDITS	PREQ
			HOURS PER WEEK				
N610	Mental Health Nursing	C	4	7	11	10	—
N620	Teaching Methods	C	3	—	3	4	—
N630	Emergency Nursing	C	3	3	6	4	N410 N420
N640	Nursing Management	C	2	—	2	4	—
N650	Preoperating Nursing	C	2	—	2	3	—
N660	Foreign Language-Terminology	C	2	—	2	3	—
N671	Nephrology Nursing	CE	2	—	2	2	—
N672	Blood Donation						
N673	Orthopaedic and Trauma Nursing						
N674	Palliative Nursing						
Total			18	10	28	30	

7th semester

CODE	COURSE	C/CE	LECT	LAB	TOTAL	ECTS CREDITS	PREQ
			HOURS PER WEEK				
N710	Community Nursing II	C	4	7	11	12	N510 N610
N720	Gerontology Nursing	C	2	3	5	5	—
N730	Health Education	C	2	—	2	5	—
N740	Epidemiology	C	2	—	2	2	—
N750	Nursing Seminars	C	3	—	3	4	—
N761	Intercultural Nursing	CE	2	—	2	2	—
N762	European Health Law and Social Policy						
N763	Rehabilitation Nursing						
N764	Hygiene and Labour Security						
Total			15	10	25	30	

8th semester

CODE	COURSE	C/CE	LECT	LAB	TOTAL PERIOD	ECTS CREDITS
N810	Diploma Thesis	C	—	—	6 months	20
N820	Internship	C	—	—	6 months	10
Total						30

C : Compulsory
CE : Compulsory Elective
LECT : Lecture

LAB : Laboratory
ECTS : European Credit Transfer System
PREQ : Prerequisite



DEPARTMENT OF PHYSIOTHERAPY

Graduates of this Department are in position to work out the appropriate therapeutic programme using natural means such as massaging and movement. The medical specializations in which a chartered physiotherapist takes part are: Orthopaedics, Neurology, Neurosurgery, General Surgery Paediatrics, Gynecology, Mid-wifery, Sports Medicine.

School of Health & Medical Care

PROGRAMME OF STUDIES

1st semester

CODE	COURSE	C/CE	LECT	LAB	TOTAL	ECTS CREDITS	PREQ
			HOURS PER WEEK				
Φ110	Anatomy- Physiology I	C	6	2	8	10	
Φ120	Human Posture and Movement	C	4	2	6	6	
Φ130	Biometry-Biostatistics	C	2	2	4	4	
Φ140	Biochemistry	C	2	-	2	4	
Φ150	Sociology	C	2	-	2	3	
Φ160	Psychology	C	2	-	2	3	
Total			18	6	24	30	

2nd semester

CODE	COURSE	C/CE	LECT	LAB	TOTAL	ECTS CREDITS	PREQ
			HOURS PER WEEK				
Φ210	Anatomy- Physiology II	C	6	2	8	10	
Φ220	Kinesiology	C	5	2	7	8	Φ110
Φ230	General Pathology	C	2	-	2	3	
Φ240	Therapeutical Massage Technics	C	4	2	6	5	
Φ250	Orthopaedics	C	4	-	4	4	
Total			21	6	27	30	

3rd semester

CODE	COURSE	C/CE	LECT	LAB	TOTAL	ECTS CREDITS	PREQ
			HOURS PER WEEK				
Φ310	Kinesio-Therapy	C	5	2	7	8	Φ220
Φ320	Electrotherapy	C	4	2	6	6	—
Φ330	Biomechanics	C	3	—	3	4	—
Φ340	Respiratory Physiotherapy	C	4	2	6	6	—
Φ350	Neuro-physiology/Neuro-pathology	C	4	—	4	4	Φ210
Φ360	Diagnostic Imaginary Tech	C	2	—	2	2	—
Total			22	6	28	30	

4th semester

CODE	COURSE	C/CE	LECT	LAB	TOTAL	ECTS CREDITS	PREQ
			HOURS PER WEEK				
Φ410	Joint & Soft Tissue Mobilization Technics	C	3	2	5	6	—
Φ420	Clinical Practice I	C	2	3	5	5	—
Φ430	Hydrotherapy	C	2	2	4	5	—
Φ440	Physiotherapeutical Assesment	C	3	—	3	5	—
Φ450	Physio for Diseases & Injuries of Circulatory System	C	3	2	5	6	—
Φ461	Deontology-Ethics	CE	2	—	2	3	—
Φ462	Family Planning						
Total			15	9	24	30	

5th semester

CODE	COURSE	C/CE	LECT	LAB	TOTAL	ECTS CREDITS	PREQ
			HOURS PER WEEK				
Φ510	Neuromascular Re-education Technics	C	3	2	5	6	—
Φ520	Clinical Practice II	C	—	6	6	4	Φ340 Φ450
Φ530	Terminology of Foreign Language	C	3	—	3	3	—
Φ540	Physio for Diseases & Injuries of Musculoskeletal System	C	5	3	8	10	—
Φ550	Paediatrics	C	2	—	2	3	—
Φ561	Orthotics-Prosthetics	CE	2	2	4	4	—
Φ562	Physio for Surgery						
Φ563	Physio for Geriatrics						
Total			15	13	28	30	

6th semester

CODE	COURSE	C/CE	LECT	LAB	TOTAL	ECTS CREDITS	PREQ
			HOURS PER WEEK				
Φ610	Clinical Practise III	C	-	6	6	4	Φ540
Φ620	Physio for Diseases & Injuries of Central Nervous System	C	5	3	8	10	—
Φ630	Physio for Diseases & Injuries of Peripheral Nervous System	C	3	1	4	6	—
Φ640	Methodology of Research in the Physiotherapy	C	2	2	4	6	—
Φ651	PC Programming	CE	2	—	2	2	—
Φ652	Ecology Principles						
Total			12	12	24	30	

7th semester

CODE	COURSE	C/CE	LECT	LAB	TOTAL	ECTS CREDITS	PREQ
			HOURS PER WEEK				
Φ710	Clinical Practice IV	C	—	9	9	7	Φ620 Φ630
Φ720	Ergonomics-Preventive Physiotherapy	C	4	—	4	6	—
Φ730	Physiotherapy in Sports Medicine	C	4	2	6	7	—
Φ741	First Aid	CE	2	—	2	4	—
Φ742	Nutrition and Alimentary Value of Food						
Φ751	Physiotherapy in Paediatrics	CE	2	2	4	6	—
Φ752	Physiotherapy in Obstretics-Gynecology-Urology						
Φ753	Special Natural Education						
Total			10	20	30	30	

8th semester

CODE	COURSE	C/CE	LECT	LAB	TOTAL PERIOD	ECTS CREDITS
Φ810	Diploma Thesis	C	—	—	6 months	20
Φ820	Internship	C	—	—	6 months	10
Total						30

C : Compulsory
 CE : Compulsory Elective
 LECT : Lecture

LAB : Laboratory
 ECTS : European Credit Transfer System
 PREQ : Prerequisite







PROGRAMME OF STUDIES

School of Technological Applications



ΠΡΟΠΤΥΧΙΑΚΑ ΠΡΟΓΡΑΜΜΑΤΑ ΣΠΟΥΔΩΝ ΤΟΥ ΑΤΕΙ ΘΕΣΣΑΛΟΝΙΚΗΣ

ΕΠΕΑΕΚ Μέτρο 2.2 Ενέργεια 2.2.2 Κατηγορία Πράξεων 2.2.2.α



ΥΠΟΥΡΓΕΙΟ ΕΘΝΙΚΗΣ ΠΑΙΔΕΙΑΣ ΚΑΙ ΘΡΗΣΚΕΥΜΑΤΩΝ
ΕΙΔΙΚΗ ΥΠΗΡΕΣΙΑ ΔΙΑΧΕΙΡΙΣΗΣ ΕΠΕΑΕΚ

ΕΥΡΩΠΑΪΚΗ ΕΝΩΣΗ
ΣΥΓΧΡΗΜΑΤΟΔΟΤΗΣΗ
ΕΥΡΩΠΑΪΚΟ ΚΟΙΝΩΝΙΚΟ ΤΑΜΕΙΟ



Η ΠΑΙΔΕΙΑ ΣΤΗΝ ΚΟΡΥΦΗ
Επιχειρησιακό Πρόγραμμα
Εκπαίδευσης και Αρχικής
Επαγγελματικής Κατάρτισης

DEPARTMENT OF AUTOMATION

Graduates of this Department can be employed to control electronic arrangements used to adjust power for the automation of assembly lines where they can also improve the efficiency of installation in general. They have a wide range of activities wherever production requires the application of automatic control.

PROGRAM OF STUDIES

1st semester

CODE	COURSE	C/CE	LECT	LAB	TOTAL	ECTS CREDITS	PREQ
AY110	Mathematics I	C	4	—	4	5	—
AY120	Physics I	C	3	—	3	5	—
AY130	Computer Programming I	C	2	3	5	5	—
AY140	Electrotechnique I	C	3	2	5	7	—
AY150	Introduction to Economics and Management	C	2	—	2	2	—
AY160	Technical Drawing I	C	—	3	3	3	—
AY170	Elements of Mechanical Engineering	C	—	3	3	3	—
Total			14	11	25	30	

OPTIONAL COURSES FOR THIS SEMESTER

- Foreign Language I (English)
- Introduction to Informatics

2nd semester

CODE	COURSE	C/CE	LECT	LAB	TOTAL	ECTS CREDITS	PREQ
AY210	Mathematics II	C	4	—	4	5	—
AY220	Physics II	C	3	2	5	5	—
AY230	Computer Programming II	C	2	2	4	5	—
AY240	Electrotechnique II	C	3	2	5	6	—
AY250	Technical Drawing II	C	—	2	2	2	—
AY260	Analogue Electronics I	C	2	2	4	5	—
AY270	Applied Mechanics	C	2	—	2	2	—
Total			16	10	26	30	

OPTIONAL COURSES FOR THIS SEMESTER

- History of Automation

3rd semester

CODE	COURSE	C/CE	LECT	LAB	TOTAL	ECTS CREDITS	PREQ
AY310	Mathematics III	C	4	—	4	5	—
AY320	Control Systems I	C	4	2	6	7	—
AY330	Computer Programming III	C	—	2	2	2	—
AY340	Digital Electronics I	C	2	2	4	5	—
AY350	Analogue Electronics II	C	2	2	4	5	—
AY360	Electric Machines	C	3	2	5	6	—
Total			15	10	25	30	

OPTIONAL COURSES FOR THIS SEMESTER

- Foreign Language II
- Computer Applications for Design

4th semester

CODE	COURSE	C/CE	LECT	LAB	TOTAL	ECTS CREDITS	PREQ
AY410	Power Electronics	C	3	3	6	6	—
AY420	Metrology I	C	2	2	4	4	—
AY430	Control Systems II	C	4	2	6	7	AY320
AY440	Automation Installation	C	2	2	4	5	—
AY450	Digital Electronics II	C	2	2	4	4	—
AY460	Telecommunications	C	2	2	4	4	—
Total			15	13	28	30	

OPTIONAL COURSES FOR THIS SEMESTER

- Introduction to Technical Thought

5th semester

CODE	COURSE	C/CE	LECT	LAB	TOTAL	ECTS CREDITS	PREQ
AY510	Motion Control	C	2	3	5	5	AY410
AY520	Metrology II	C	2	—	2	2	AY420
AY530	Hydraulic and Pneumatic Control Systems	C	2	3	5	6	AY440
AY540	Microcomputers	C	3	2	5	5	—
AY550	Computer Networks	C	3	2	5	6	—
AY560	Digital Signal Processing	C	3	2	5	6	AY210
Total			15	12	27	30	

OPTIONAL COURSES FOR THIS SEMESTER

- Electric-Electronic Construction

6th semester

CODE	COURSE	C/CE	LECT	LAB	TOTAL	ECTS CREDITS	PREQ
AY610	Digital Control Systems	C	3	2	5	6	AY560
AY620	Robotics and Virtual Reality	C	3	3	6	6	—
AY630	CAD/CAM/CAE	C	3	3	6	6	—
AY640	MicroControllers	C	2	3	5	6	—
AY650	Safety, Industrial Hygiene and Environmental Protection	C	1	—	1	2	—
AY660	Physical and Chemical Processes	C	2	—	2	2	—
AY671	Project Management	CE	2	—	2	2	—
AY672	Foreign Language Terminology						—
Total			16	11	27	30	

OPTIONAL COURSES FOR THIS SEMESTER

- Selected Topics in Hydraulic and Pneumatic Control Systems
- Selected Topics in Networks

7th semester

CODE	COURSE	C/CE	LECT	LAB	TOTAL	ECTS CREDITS	PREQ
AY710	Selected Topics in Control Systems	C	4	—	4	5	AY430
AY720	Design and Implementation of Control Systems	C	—	3	3	5	AY430
AY730	Intelligent Control	C	2	2	4	5	—
AY740	Controllers-Industrial Automation	C	2	3	5	6	AY440
AY750	Machine, NC, CNC	C	2	2	4	4	—
AY760	Control of Production Processes	C	3	2	5	5	AY660
Total			13	12	25	30	

OPTIONAL COURSES FOR THIS SEMESTER

- Selected Topics in Robotics and CNC

8th semester

CODE	COURSE	C/CE	LECT	LAB	TOTAL PERIOD	ECTS CREDITS
AY810	Graduate Project	C	—	—	6 months	20
AY820	Industrial Placement Training Period	C	—	—	6 months	10
Total						30

C : Compulsory
CE : Compulsory Elective
LECT : Lecture

LAB : Laboratory
ECTS : European Credit Transfer System
PREQ : Prerequisite



DEPARTMENT OF CIVIL INFRASTRUCTURE ENGINEERING

The potential activities of those graduating the Department of Civil Infrastructure Technology are:

- construction of private and public works.
- supervision of construction, detailing quantity surveying, costing
- design of small projects
- participation in design teams of large scale projects.

PROGRAM OF STUDIES

1st semester

CODE	COURSE	C/CE	LECT	LAB	TOTAL	ECTS CREDITS	PREQ
EY110	Mathematics	C	5	—	5	6	—
EY120	Physics	C	2	2	4	5	—
EY130	Chemical Technology	C	2	2	4	5	—
EY140	Technical Drawing	C	—	3	3	2	—
EY150	Statics	C	4	2	6	7	—
EY160	Introduction to Computers	C	2	2	4	5	—
Total			15	11	26	30	

2nd semester

CODE	COURSE	C/CE	LECT	LAB	TOTAL	ECTS CREDITS	PREQ
EY210	Applied Mathematics	C	5	—	5	6	—
EY220	Physics: Special Topics	C	2	2	4	5	—
EY230	Materials Technology	C	2	2	4	5	—
EY240	Surveying	C	2	3	5	6	—
EY250	Strength of Materials	C	3	2	5	6	—
EY260	Computer Programming	C	—	3	3	2	EY160
Total			14	11	25	30	

3rd semester

CODE	COURSE	C/CE	LECT	LAB	TOTAL	ECTS CREDITS	PREQ
EY310	Soil Mechanics I	C	2	2	4	5	—
EY320	Hydraulics I	C	2	3	5	5.5	—
EY330	Applied Statics	C	2	2	4	5	EY150
EY340	Engineering Geology	C	2	2	4	4.5	—
EY350	Construction Plants and Machinery	C	4	—	4	4.5	—
EY360	Special Topics of Surveying	C	2	3	5	5.5	EY240
Total			14	12	26	30	

4th semester

CODE	COURSE	C/CE	LECT	LAB	TOTAL	ECTS CREDITS	PREQ
EY410	Soil Mechanics II	C	2	2	4	5	EY310
EY420	Hydraulics II	C	2	2	4	5	—
EY430	Highway Engineering I	C	2	2	4	5	—
EY440	Reinforced Concrete	C	3	2	5	6	—
EY450	Hydrology-Ground Water Engineering	C	4	—	4	4.5	—
EY460	Technical Legislation	C	3	—	3	4.5	—
Total			16	8	24	30	

5th semester

CODE	COURSE	C/CE	LECT	LAB	TOTAL	ECTS CREDITS	PREQ
EY510	RockMechanics-Tunnelling	C	2	2	4	5	—
EY520	Highway Engineering II	C	2	2	4	4.5	EY430
EY530	Construction Management	C	4	—	4	4.5	—
EY540	Water Supply Engineering	C	2	3	5	6	EY320
*	CE (See the table)*	CE	2	3	5	5.5	—
EY560	Technical Economics	C	4	—	4	4.5	—
Total			16	10	26	30	

6th semester

CODE	COURSE	C/CE	LECT	LAB	TOTAL	ECTS CREDITS	PREQ
EY610	Sewage Systems	C	2	2	4	5	EY220
EY620	Highway Technical Works	C	3	3	6	7	—
*	CE (See the table)*	CE	2	3	5	5.5	—
*	CE (See the table)*	CE	2	3	5	5.5	—
*	A.E.L.H (See the table)*	CE	6	—	6	7	—
Total			15	11	26	30	

7th semester

CODE	COURSE	C/CE	LECT	LAB	TOTAL	ECTS CREDITS	PREQ
EY710	Environmental Design of Engineering Works	C	3	3	6	7	—
EY720	Foreign Language-Terminology	C	4	—	4	5	—
*	CE (See the table)*	CE	2	3	5	5.5	—
*	CE (See the table)*	CE	2	3	5	5.5	—
EY750	Safety Regulation	C	6	—	6	7	—
Total			17	9	26	30	

8th semester

CODE	COURSE	C/CE	LECT	LAB	TOTAL PERIOD	ECTS CREDITS
EY810	Diploma Thesis	C	—	—	6 months	20
EY820	Practical Training	C	—	—	6 months	10
Total						30

***TABLE OF A.E.L.H COURSES**

CODE	COURSE
EY1	Business Management
EY2	Operational Research
EY3	Entrepreneurship

***CE: TABLE OF COMPULSORY ELECTIVE COURSES**

CODE	COURSE	PREQ
EY01	Junction Technique	—
EY02	Harbour Works	—
EY03	Railway Engineering	—
EY04	Hydrodynamic Works	—
EY05	Airport Design	—
EY06	River Engineering	EY420
EY07	Bridge Engineering	—
EY08	Irrigation-Draining	EY420
EY09	Earthquake-resistant Design of Technical Projects	—
EY10	Design and Construction of Waste Process Installation	—

OPTIONAL COURSES

Foreign Language I
Foreign Language II
Drawing with Computer
Surveying with Computer
Highway Engineering with Computer
Geotechnical Engineering with Computer
Geographical Information Systems
Budget and Costing of Technical Works with Computer
Project Management with Computer
Tunnels Research with Computer
Hydraulic Works Analysis with Computer
Study of Environmental Impacts
Environmental Geotechnics
Infrastructure and Zoning Works - Regional Development

AELH : Administration, Economics,
Legislation, Humanities
Compulsory Elective Courses

C : Compulsory

CE : Compulsory Elective

LECT : Lecture

LAB : Laboratory

ECTS : European Credit Transfer System

PREQ : Prerequisite



DEPARTMENT OF ELECTRONICS

Graduates of this Department deal with the study, research and application of technology on contemporary and specialized fields of electronics (telecommunications, audio-visuals aids, radio and television, automatic control systems, computers) as well as with the production of electronic components, arrangements, appliances and systems for the manufacture of other products.

School of Technological Applications

PROGRAM OF STUDIES

1st semester

CODE	COURSE	C/CE	LECT	LAB	TOTAL	ECTS CREDITS	PREQ
HA110	Mathematics I	C	6	—	6	8	—
HA120	Physics I	C	4	2	6	7	—
HA130	Electronic Physics	C	3	2	5	5	—
HA140	Electrical Engineering I	C	2	2	4	5	—
HA150	Computer Programming I	C	2	2	4	5	—
Total			17	8	25	30	

2nd semester

CODE	COURSE	C/CE	LECT	LAB	TOTAL	ECTS CREDITS	PREQ
HA210	Electronics I	C	4	2	6	6	—
HA220	Digital Circuits I	C	3	2	5	6	—
HA230	Electrical Engineering II	C	4	—	4	4	HA140
HA240	Computer Programming II	C	2	2	4	4	—
HA250	Mathematics II	C	4	—	4	6	HA110
HA260	Electrical Measurements	C	2	2	4	4	—
Total			19	8	27	30	

3rd semester

CODE	COURSE	C/CE	LECT	LAB	TOTAL	ECTS CREDITS	PREQ
HA310	Electronics II	C	4	2	6	8	HA210
HA320	Digital Circuits II	C	3	2	5	7	HA220
HA330	Optoelectronics	C	2	2	4	5	HA130
HA340	Circuit Theory	C	4	2	6	7	HA140
HA350	Probability Theory and Statistics	C	2	—	2	3	—
Total			15	8	23	30	

4th semester

CODE	COURSE	C/CE	LECT	LAB	TOTAL	ECTS CREDITS	PREQ
HA410	Electronics III	C	4	2	6	8	—
HA420	Telecommunications I	C	3	2	5	6	—
HA430	Microcomputers I	C	2	2	4	5	—
HA440	CAD and Electronic Construction	C	—	3	3	4	—
HA450	Electronic Measurements	C	2	2	4	5	HA310
HA460	Technical Legislation and Economic and Technical Studies	C	2	—	2	2	—
Total			13	11	24	30	

5th semester

CODE	COURSE	C/CE	LECT	LAB	TOTAL	ECTS CREDITS	PREQ
HA510	Antennas and Transmission Lines	C	5	2	7	9	—
HA520	Signals and Systems	C	3	—	3	4	—
HA530	Telecommunications II	C	2	2	4	5	—
HA540	Microcomputers II	C	2	2	4	5	—
HA550	Mass Media Communications Technologies I	C	2	2	4	5	—
HA560	Professional Ethics	C	2	—	2	2	—
Total			16	8	24	30	

6th semester

CODE	COURSE	C/CE	LECT	LAB	TOTAL	ECTS CREDITS	PREQ
HA610	Automatic Control Systems	C	4	2	6	8	—
HA620	Mass Media Communications Technologies II	C	2	2	4	5	—
HA631	Propagation of Waves	CE	2	—	2	3	—
HA632	Sound Systems						—
HA633	Foreign Language Terminology						—
HA641	Microwaves	CE	2	2	4	6	—
HA642	Applications of Microcomputers						HA430
HA643	Sensors						—
HA651	TeleCommunications III	CE	2	2	4	6	—
HA652	Computer Architecture						—
HA653	Industrial Automation						—
HA660	Entrepreneurship	C	2	—	2	2	—
Total			14	8	22	30	

7th semester

CODE	COURSE	C/CE	LECT	LAB	TOTAL	ECTS CREDITS	PREQ
HA710	Power Electronics	C	4	3	7	8	—
HA720	Digital Signal Processing	C	2	2	4	5	—
HA731	Automatic Control Systems	CE	2	—	2	3	—
HA732	Microelectronics VLSI						—
HA733	Medical Technology						—
HA741	Mobile and Satellite Communications	CE	2	2	4	6	—
HA742	Computer and Multimedia Networks						—
HA743	Radio and Television Production						—
HA751	Radar and Satellite Systems	CE	2	2	4	6	—
HA752	Digital Control Systems						—
HA753	Optical Communications						—
HA760	Principles of Management	C	2	—	2	2	—
Total			14	9	23	30	

8th semester

CODE	COURSE	C/CE	LECT	LAB	TOTAL PERIOD	ECTS CREDITS
HA810	Diploma Thesis	C	—	—	6 months	20
HA820	Practical Training	C	—	—	6 months	10
Total						30

C : Compulsory
CE : Compulsory Elective
LECT : Lecture

LAB : Laboratory
ECTS : European Credit Transfer System
PREQ : Prerequisite

DEPARTMENT OF INFORMATICS

Graduates of this Department can be employed in the private and public sector in the areas of providing software services as well as in the production of software products (programmes and tools).

PROGRAM OF STUDIES

1st semester

CODE	COURSE	C/CE	LECT	LAB	TOTAL	ECTS CREDITS	PREQ
ΠΛ110	Introduction to Informatics	C	4	2	6	6	—
ΠΛ120	Computer Programming I	C	4	2	6	6	—
ΠΛ130	Digital Systems	C	3	2	5	6	—
ΠΛ140	Mathematical Analysis	C	4	—	4	6	—
ΠΛ150	Communication Skills	C	3	2	5	6	—
Total			18	8	26	30	

OPTIONAL COURSES FOR THIS SEMESTER

- English I

2nd semester

CODE	COURSE	C/CE	LECT	LAB	TOTAL	ECTS CREDITS	PREQ
ΠΛ210	Computer Programming II	C	4	2	6	6	ΠΛ120
ΠΛ220	Computer Organisation and Architecture	C	4	2	6	6	ΠΛ110
ΠΛ230	Discrete Mathematics	C	4	—	4	6	—
ΠΛ240	English for Computing Systems	C	4	—	4	6	—
ΠΛ250	Economics-Management	C	4	—	4	6	—
Total			20	4	24	30	

OPTIONAL COURSES FOR THIS SEMESTER

- English II

3rd semester

CODE	COURSE	C/CE	LECT	LAB	TOTAL	ECTS CREDITS	PREQ
ΠΛ310	Numerical Analysis	C	4	2	6	6	—
ΠΛ320	Data Structures	C	4	2	6	6	ΠΛ210
ΠΛ330	Operating Systems I	C	4	—	4	6	ΠΛ220
ΠΛ340	Information Systems I	C	4	—	4	6	—
ΠΛ350	Probability and Statistics	C	3	2	5	6	—
Total			19	6	25	30	

4th semester

CODE	COURSE	C/CE	LECT	LAB	TOTAL	ECTS CREDITS	PREQ
ΠΛ410	Programming Methodologies I	C	4	2	6	6	—
ΠΛ420	Data Bases I	C	4	2	6	6	—
ΠΛ430	Telecommunications and Computer Networks	C	4	—	4	6	—
ΠΛ440	Software Engineering	C	4	—	4	6	—
ΠΛ450	Operational Research	C	4	—	4	6	—
Total			20	4	24	30	

5th semester

CODE	COURSE	C/CE	LECT	LAB	TOTAL	ECTS CREDITS	PREQ
ΠΛ510	Information Systems II	C	4	—	—	6	—
ΠΛ520	Development of User Interfaces	C	4	2	6	6	—
ΠΛ530	Programming Methodologies II	C	4	2	6	6	ΠΛ410
ΠΛ540	Artificial Intelligence	C	4	2	6	6	—
ΠΛ550	Didactic Methodology Professional Ethics	C	4	—	4	6	—
Total			20	6	26	30	

OPTIONAL COURSES FOR THIS SEMESTER

- Entrepreneurship

6th semester

CODE	COURSE	C/CE	LECT	LAB	TOTAL	ECTS CREDITS	PREQ
ΠΛ610	Operating Systems II	C	3	2	5	6	—
ΠΛ620	Computer Networks	C	4	2	6	6	ΠΛ430
ΠΛ630	Data Bases II	C	4	2	6	6	ΠΛ420
ΠΛ640	Internet Applications Programming	C	4	2	6	6	—
ΠΛ650	Informatics and Society/ Techniques of Labour Market	C	4	—	4	6	—
Total			19	8	27	30	

7th semester

CODE	COURSE	C/CE	LECT	LAB	TOTAL	ECTS CREDITS	PREQ
ΠΛ710	Development and Administration of Software Applications	C	4	2	6	6	—
*	CE (see the Table)*	CE	4/3	2	6/5	6	—
*	CE (see the Table)*	CE	4/3	2	6/5	6	—
*	CE (see the Table)*	CE	4/3	2	6/5	6	—
*	CE (see the Table)*	CE	4/3	2	6/5	6	—
Total			16-20	10	26-30	30	

OPTIONAL COURSES FOR THIS SEMESTER

- Data Mining from Databases
- Geographical Information Systems (GIS)

8th semester

CODE	COURSE	C/CE	LECT	LAB	TOTAL PERIOD	ECTS CREDITS
ΠΛ810	Diploma Thesis	C	—	—	6 months	20
ΠΛ820	Practical Training	C	—	—	6 months	10
Total						30

*CE: TABLE OF COMPULSORY ELECTIVE COURSES

CODE	COURSE	C/CE	LECT	LAB	TOTAL	ECTS CREDITS	PREQ
ΠΛ01	Information Systems: Special Subjects	CE	4	2	6	6	—
ΠΛ02	Multimedia Technology	CE	4	2	6	6	—
ΠΛ03	Neural Networks	CE	3	2	5	6	—
ΠΛ04	Artificial Intelligence: Special Subjects	CE	3	2	5	6	—
ΠΛ05	Parallel and Distributed Systems	CE	3	2	5	6	—
ΠΛ06	Computer Graphics	CE	3	2	5	6	—
ΠΛ07	Image and Signal Processing	CE	4	2	6	6	—
ΠΛ08	Software Quality and Reliability	CE	4	2	6	6	—
ΠΛ09	Databases: Special Subjects	CE	4	2	6	6	—
ΠΛ10	Intelligent Systems	CE	3	2	5	6	—
ΠΛ11	Management Information Systems	CE	4	2	6	6	—
ΠΛ12	Advanced Computer Architectures	CE	3	2	5	6	—
ΠΛ13	Electronic Commerce	CE	3	2	5	6	—
ΠΛ14	Computer Security	CE	3	2	5	6	—
ΠΛ15	Languages and Compilers	CE	4	2	6	6	—

C : Compulsory

CE : Compulsory Elective

LECT : Lecture

LAB : Laboratory

ECTS : European Credit Transfer System

PREQ : Prerequisite

DEPARTMENT OF VEHICLE TECHNOLOGY

Graduates of this Department are in charge of work covering the whole spectrum of activities related to vehicles (cars, motorcycles and mopeds) in the private and public sector.

CURRICULUM OF THE DEPARTMENT OF VEHICLE TECHNOLOGY

1st semester

CODE	COURSE	C/CE	LECT	LAB	TOTAL	ECTS CREDITS	PREQ
OX110	Mathematics	C	6	—	6	9	—
OX120	General Chemistry	C	2	1	3	5	—
OX130	Mechanical Laboratory I&II, Vehicles Lab.	C	2	10	12	10	—
OX140	Mechanical Drawing	C	1	3	4	3	—
OX150	Work Safety & Protection of the Environment	C	2	—	2	3	—
Total			13	14	27	30	

OPTIONAL COURSES FOR THIS SEMESTER

- Professional Ethics

2nd semester

CODE	COURSE	C/CE	LECT	LAB	TOTAL	ECTS CREDITS	PREQ
OX210	Physics I	C	2	2	4	5	—
OX220	Mechanics	C	3	2	5	6	—
OX230	Design of Mechanical Structures	C	2	2	4	5	OX140
OX240	Foreign Language Terminology	C	—	3	3	2	—
OX250	Computer programming	C	2	3	5	6	—
OX260	Applied Mathematics	C	5	—	5	6	—
Total			14	12	26	30	

3rd semester

CODE	COURSE	C/CE	LECT	LAB	TOTAL	ECTS CREDITS	PREQ
OX310	Physics II	C	3	2	5	6	OX210
OX320	Strength of Materials-Dynamics	C	5	2	7	9	OX220
OX330	Design with CAD	C	—	4	4	2	OX140
OX340	Thermo-dynamics	C	4	—	4	6	—
OX350	Technology of Materials	C	3	3	6	7	—
Total			15	11	26	30	

4th semester

CODE	COURSE	C/CE	LECT	LAB	TOTAL	ECTS CREDITS	PREQ
OX410	Heat Transfer	C	3	—	3	4	—
OX420	Internal Combustion Engines I	C	3	2	5	6	OX340
OX430	Economic Analysis	C	3	—	3	4	—
OX440	Automotive Electrical Systems	C	3	3	6	6	—
OX450	Fluid Mechanics	C	2	2	4	5	—
OX460	Machine Design I	C	3	2	5	5	—
Total			17	9	26	30	

5th semester

CODE	COURSE	C/CE	LECT	LAB	TOTAL	ECTS CREDITS	PREQ
OX510	Material Forming Processes I -Tribology	C	4	2	6	6	—
OX520	Machine Design II	C	3	2	5	5	OX460
OX530	Automotive Electronic Systems	C	2	2	4	5	OX440
OX540	Measuring Technology	C	2	2	4	5	—
OX550	Automotive Aerodynamics	C	2	2	4	5	—
OX560	Quality Management	C	3	—	3	4	—
Total			16	10	26	30	

6th semester

CODE	COURSE	C/CE	LECT	LAB	TOTAL	ECTS CREDITS	PREQ
OX610	Internal Combustion Engines II	C	3	3	6	7	OX420
OX620	Dynamics of Vehicles	C	2	2	4	5	—
OX630	Vehicles I - Transmissions	C	3	2	5	6	—
*	CE (see the Table)*	CE	3	—	3	4	—
*	CE (see the Table)*	CE	3	—	3	4	—
*	CE (see the Table)*	CE	3	—	3	4	—
Total			17	7	24	30	

7th semester

CODE	COURSE	C/CE	LECT	LAB	TOTAL	ECTS CREDITS	PREQ
OX710	Production Management	C	2	2	4	5	—
OX720	Vehicles II	C	3	2	5	6	—
OX730	Material Forming Processes II -CAM	C	2	4	6	7	—
*	CE (see the Table)*	C	3	—	3	4	—
*	CE (see the Table)*	C	3	—	3	4	—
*	CE (see the Table)*	C	3	—	3	4	—
Total			16	8	24	30	

8th semester

CODE	COURSE	C/CE	LECT	LAB	TOTAL PERIOD	ECTS CREDITS
OX810	Diploma Thesis	C	—	—	6 months	20
OX820	Practical Training	C	—	—	6 months	10
Total						30

***CE: TABLE OF COMPULSORY ELECTIVE COURSES**

CODE	COURSE	CODE	COURSE
OX01	Automotive Air-conditioning	OX10	Motorcycles
OX02	Electrical vehicles	OX11	CAD and Finite Elements applications
OX03	Hydraulic & Pneumatic systems	OX12	Trucks and buses
OX04	Novel design methods of combustion engines	OX13	Traffic accidents Consulting
OX05	Antipollution Technologies	OX14	Automotive Legislation
OX06	Computational Fluid Dynamics	OX15	Costing and Evaluation
OX07	Tractors and Off-road Vehicles	OX16	Project management
OX08	Metallic Structures of Vehicles	OX17	Ergonomics
OX09	Vehicles on track		

OPTIONAL COURSES

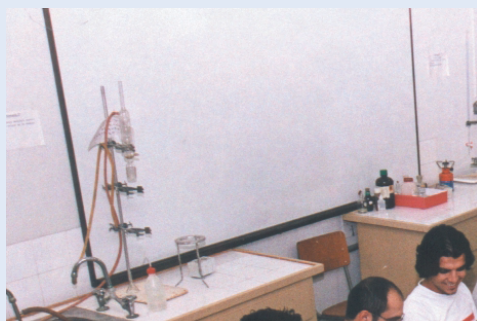
Foreign Language I*	Technical Project Machinery
Foreign Language II*	Power Electronics
Computer Usage	Electric and Electronic Drawing
Technical Inspection of Vehicles	Computer Programming II
Introduction to Technical Thinking	Informatics and Society
Digital Control Systems	Artificial Intelligence
Railway Engineering	Accounting and Marketing
Digital Road Construction	

*** Foreign Language: English, French, German, Italian, Russian**

C : Compulsory
CE : Compulsory Elective
LECT : Lecture

LAB : Laboratory
ECTS : European Credit Transfer System
PREQ : Prerequisite

GENERAL DEPARTMENT OF SCIENCES



The Department of Sciences covers the needs of all faculties of T.E.I.TH on the following subjects:

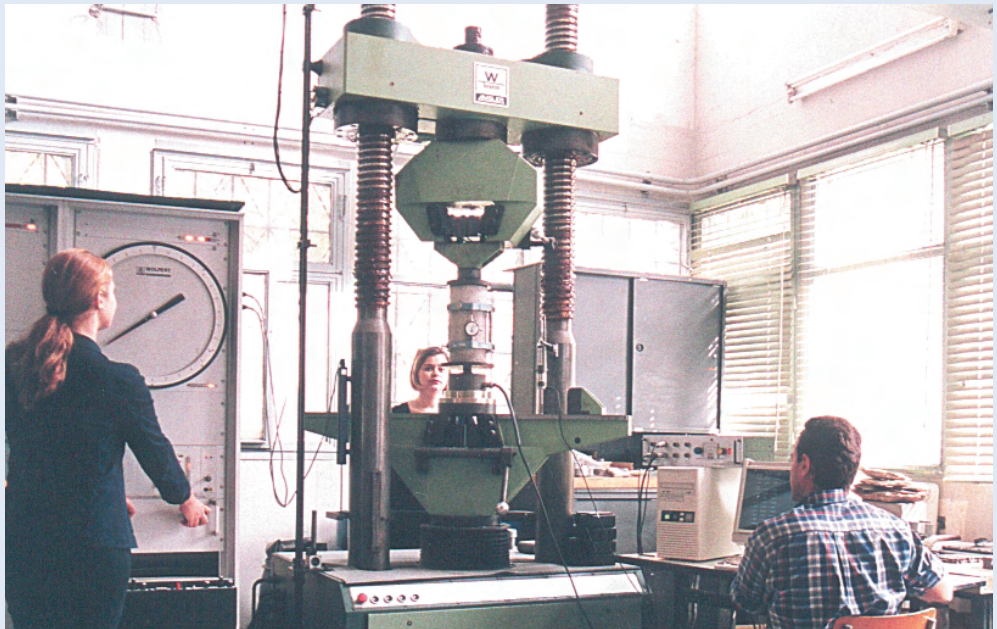
- Physics
- Mathematics
- Statistics
- Chemistry
- Applied Informatics
- Chemical Technology and Quality Control
- Medical Physics
- Nuclear Medicine
- Biophysics
- Environmental Protection
- Atmospheric Pollution
- Radioactivity

The Department runs special Laboratories for teaching and research on:

- Physics
- Chemistry
- Chemical Technology
- Applied Informatics and Statistics
- Atmospheric Pollution
- Environmental Radioactivity

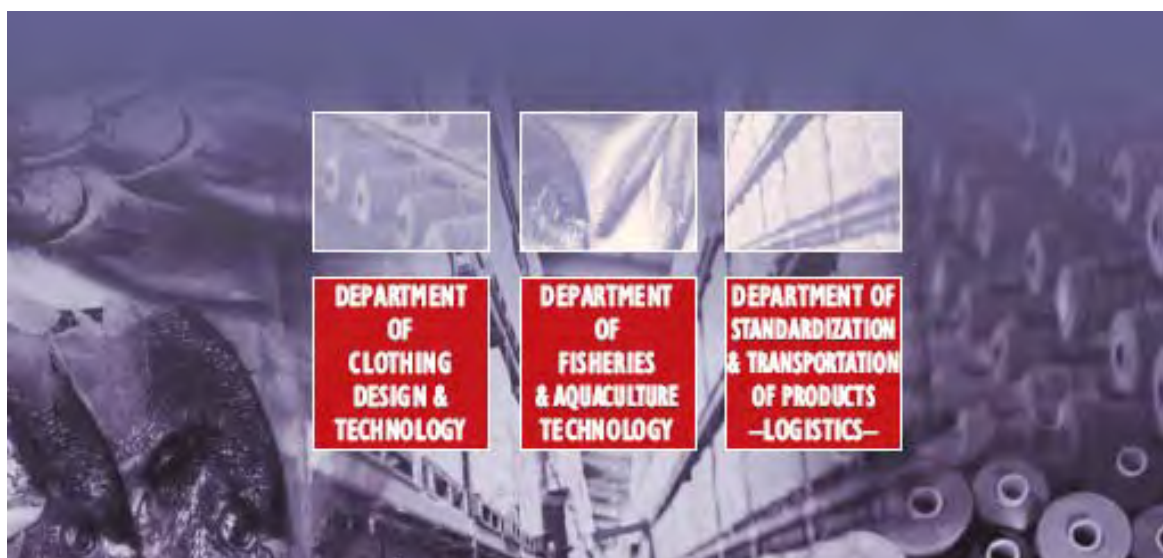






PROGRAMME OF STUDIES

New Departments



ΠΡΟΠΤΥΧΙΑΚΑ ΠΡΟΓΡΑΜΜΑΤΑ ΣΠΟΥΔΩΝ ΤΟΥ ΑΤΕΙ ΘΕΣΣΑΛΟΝΙΚΗΣ

ΕΠΕΑΕΚ Μέτρο 2.2 Ενέργεια 2.2.2 Κατηγορία Πράξεων 2.2.2.α



ΥΠΟΥΡΓΕΙΟ ΕΘΝΙΚΗΣ ΠΑΙΔΕΙΑΣ ΚΑΙ ΘΡΗΣΚΕΥΜΑΤΩΝ
ΕΙΔΙΚΗ ΥΠΗΡΕΣΙΑ ΔΙΑΧΕΙΡΙΣΗΣ ΕΠΕΑΕΚ

ΕΥΡΩΠΑΪΚΗ ΕΝΩΣΗ
ΣΥΓΧΡΗΜΑΤΟΔΟΤΗΣΗ
ΕΥΡΩΠΑΪΚΟ ΚΟΙΝΩΝΙΚΟ ΤΑΜΕΙΟ



Η ΠΑΙΔΕΙΑ ΣΤΗΝ ΚΟΡΥΦΗ
Επιχειρησιακό Πρόγραμμα
Εκπαίδευσης και Αρχικής
Επαγγελματικής Κατάρτισης

New Departments

DEPARTMENT OF CLOTHING DESIGN & TECHNOLOGY

Graduates of this Department can be employed in the Garment Industry either in their own enterprises or as executives in Garment Design and Making Companies.

PROGRAM OF STUDIES

1st semester

CODE	COURSE	C/CE	LECT	LAB	TOTAL	ECTS CREDITS	PREQ
			HOURS PER WEEK				
ΣΠΕΙ10	Mathematics	C	5	—	5	6.5	—
ΣΠΕΙ20	Physics	C	3	2	5	6.5	—
ΣΠΕΙ30	Chemistry	C	2	3	5	5.5	—
ΣΠΕΙ40	Introduction to Textile and Clothing Industry	C	3	3	6	7	—
ΣΠΕΙ50	Design and Chromatology I	C	1	4	5	4.5	—
Total			14	12	26	30	

OPTIONAL COURSES FOR THIS SEMESTER: English I

2nd semester

CODE	COURSE	C/CE	LECT	LAB	TOTAL	ECTS CREDITS	PREQ
			HOURS PER WEEK				
ΣΠΕ210	Textile Fibers	C	2	2	4	5	—
ΣΠΕ220	Textile Processing	C	2	3	5	5.5	—
ΣΠΕ230	Principles of Accounting and Costing	C	5	—	5	5.5	—
ΣΠΕ240	Design and Chromatology II	C	1	4	5	4	ΣΠΕΙ50
ΣΠΕ250	Introduction to Business Adminsitration	C	4	—	4	5	—
ΣΠΕ260	Operation of Computer Programs I	C	2	2	4	5	—
Total			12	13	25	30	

OPTIONAL COURSES FOR THIS SEMESTER: English II

3rd semester

CODE	COURSE	C/CE	LECT	LAB	TOTAL	ECTS CREDITS	PREQ
			HOURS PER WEEK				
ΣΠΕ310	Quality Control I	C	2	2	4	5	—
ΣΠΕ320	Systems of Garment Production	C	3	—	3	3.5	—
ΣΠΕ330	Technology of Garment Pattern Making I	C	3	2	5	6.5	—
ΣΠΕ340	Garment Design	C	3	2	5	6.5	ΣΠΕ240
ΣΠΕ350	History of Art and Design	C	3	—	3	3.5	—
ΣΠΕ360	Operation of Computer Programs II	C	2	2	4	5	ΣΠΕ260
Total			16	8	24	30	

OPTIONAL COURSES FOR THIS SEMESTER: English III

4th semester

CODE	COURSE	C/CE	LECT	LAB	TOTAL	ECTS CREDITS	PREQ
			HOURS PER WEEK				
ΣΠΕ410	Economic Dimension of Garment Making	C	3	—	3	4	—
ΣΠΕ420	Science of Fabric	C	2	3	5	5.5	—
ΣΠΕ430	Introduction to Garment Production	C	2	2	4	4	—
ΣΠΕ440	Textile Statistics	C	5	—	5	5.5	—
ΣΠΕ450	Quality Control II	C	2	3	5	5.5	ΣΠΕ310
ΣΠΕ460	General Principles of Marketing	C	4	—	4	5.5	—
Total			11	11	22	30	

5th semester

CODE	COURSE	C/CE	LECT	LAB	TOTAL	ECTS CREDITS	PREQ
			HOURS PER WEEK				
ΣΠΕ510	Introduction to Textile Economics	C	3	—	3	4.5	—
ΣΠΕ520	Technology of Garment Pattern Making I	C	2	3	5	5.5	—
ΣΠΕ530	Supply chain Management	C	5	—	5	6.5	—
Course group: Design							
ΣΠΕ540	Clothing Design and Conversion to Pattern	C	3	3	6	7	—
ΣΠΕ550	Fashion History and Customery	C	5	—	5	6.5	—
Course group: Production							
ΣΠΕ541	Production Management	C	5	—	5	6.5	—
ΣΠΕ542	Textile Electronic Systems	C	3	2	5	7	—
Total			18	6	24	30	

OPTIONAL COURSES FOR THIS SEMESTER: Entrepreneurship II

6th semester

CODE	COURSE	C/CE	LECT	LAB	TOTAL	ECTS CREDITS	PREQ
			HOURS PER WEEK				
ΣΠΕ610	Garment Costing	C	4	—	4	5	—
ΣΠΕ620	Human Resources Management	C	4	—	4	3.5	—
ΣΠΕ630	Spreading Market Positioning and Cutting	C	2	2	4	5	—
ΣΠΕ640	English-Terminology	C	3	—	3	5	—
ΣΠΕ650	CAD	C	2	4	6	6	—
Course group: Design							
ΣΠΕ660	Design, Development and Presenation of Artistic Mode	C	2	3	5	5.5	—
Course group: Production							
ΣΠΕ661	Clothing Technology	C	2	3	5	5.5	—
Total			17	9	26	30	

7th semester

CODE	COURSE	C/CE	LECT	LAB	TOTAL	ECTS CREDITS	PREQ
			HOURS PER WEEK				
ΣΠΕ710	Sewing Technology	C	2	4	6	5.5	—
ΣΠΕ720	Business Administration of Garment Making Companies	C	4	—	4	4	—
ΣΠΕ730	Seminar for Senior Students	C	4	—	4	6.5	—
ΣΠΕ740	Profession Ethics	C	2	—	3	3	—
	Course group: Design						
ΣΠΕ750	Industrial Design of Garment	C	2	4	6	5.5	—
ΣΠΕ760	Haute Couture Design	C	2	4	6	5.5	—
	Course group: Production						
ΣΠΕ751	Technology of Clothing production Machinery	C	2	4	6	5.5	—
ΣΠΕ761	Electronic Systems of Clothing Production	C	2	4	6	5.5	—
Total			16	12	28	30	

OPTIONAL COURSES FOR THIS SEMESTER: Mentoring

8th semester

CODE	COURSE	C/CE	LECT	LAB	TOTAL PERIOD	ECTS CREDITS
ΣΠΕ810	Graduate Project	C	—	—	6 months	10
ΣΠΕ820	Industrial Placement Training Period	C	—	—	6 months	—
Total						10

Prerequisite courses for optional**LIST A****LIST B**

Entrepreneurship I

Mentoring

Entrepreneurship II

C : Compulsory
CE : Compulsory Elective
LECT : Lecture

LAB : Laboratory
ECTS : European Credit Transfer System
PREQ : Prerequisite



DEPARTMENT OF FISHERIES & AQUACULTURE TECHNOLOGY

(N. Moudania)

Graduates of this Department are experts in the study and applications of updated fisheries and aquaculture technology.

They can be employed:

- in fish-culture farms dealing with nutrition and enrichment of fish or shell-cultured species
- in the fisheries processing companies for frozen, salted or smoked fish products
- in industries dealing with research, oceanography or shell and fisheries management
- in laboratories responsible for water quality.

New Departments

PROGRAM OF STUDIES

1st semester

CODE	COURSE	C/CE	LECT	LAB	TOTAL	ECTS CREDITS	PREQ
			HOURS PER WEEK				
TAY110	Physical Oceanography	C	2	2	4	5	—
TAY120	Inorganic Chemistry	C	3	3	6	6	—
TAY130	Mathematics	C	4	—	4	5	—
TAY140	Computer Science	C	1	3	4	4	—
TAY150	General Principles of Biology and Physiology	C	2	1	3	5	—
TAY160	General and Applied Hydraulics	C	2	2	4	5	—
Total			16	13	29	30	

OPTIONAL COURSES FOR THIS SEMESTER: English I

2nd semester

CODE	COURSE	C/CE	LECT	LAB	TOTAL	ECTS CREDITS	PREQ
			HOURS PER WEEK				
TAY210	Chemical Oceanography	C	2	2	4	5	TAY120
TAY220	Marine Biology	C	2	2	4	5	—
TAY230	Organic Chemistry and Biochemistry	C	3	3	6	7	TAY120
TAY240	Analytical Chemistry and Organic Analysis	C	1	3	4	4	TAY120
TAY250	Limnology	C	2	2	4	5	—
TAY260	Information Management Systems	C	1	3	4	4	TAY140
Total			13	15	28	30	

OPTIONAL COURSES FOR THIS SEMESTER: English II

3rd semester

CODE	COURSE	C/CE	LECT	LAB	TOTAL	ECTS CREDITS	PREQ
			HOURS PER WEEK				
TTAY310	Fish Genetics	C	3	1	4	5	—
TAY320	Marine Organisms Ecology	C	2	2	4	5	—
TAY330	Fish Biology and Systematics	C	2	3	5	5	—
TAY340	Biostatistics I and Parametric Analysis	C	2	2	4	5	—
TAY350	Fisheries Technology	C	2	3	5	5.5	—
TAY360	Sedimentology	C	2	2	4	4.5	—
Total			15	13	28	30	

OPTIONAL COURSES FOR THIS SEMESTER: English III

4th semester

CODE	COURSE	C/CE	LECT	LAB	TOTAL	ECTS CREDITS	PREQ
			HOURS PER WEEK				
TAY410	Genetic Engineering and Biotechnology	C	3	2	5	6.5	TAY310
TAY420	Fish Cultures	C	2	2	4	5	—
TAY430	Shells Fisheries and Management	C	2	3	5	6	—
TAY441	Population Dynamics of Marine Organisms	CE	2	2	4	5	—
TAY442	Photosynthetic Microorganisms						
TAY451	Biostatistics II - Non Parametric Analysis and Regression	CE	3	2	5	6.5	TAY340
TAY452	Aquariology						
Total			13	12	25	30	

OPTIONAL COURSES FOR THIS SEMESTER: English IV-Terminology

5th semester

CODE	COURSE	C/CE	LECT	LAB	TOTAL	ECTS CREDITS	PREQ
			HOURS PER WEEK				
TAY511	Fresh Water Fish Culture	CE	3	2	5	6	—
TAY512	Estuarine Fish Culture						
TAY520	Shell Cultures	C	3	2	5	6	—
TAY530	General Fish Pathology	C	2	2	4	5	—
TAY540	Cultured Species Nutrition	C	2	2	4	5	—
TAY550	Inspection and Quality Protection	C	2	3	5	5	—
TAY561	Fisheries Products Marketing	CE	2	—	2	3	—
TAY562	Financial Aquaculture Management						
Total			14	13	27	30	

6th semester

CODE	COURSE	C/CE	LECT	LAB	TOTAL	ECTS CREDITS	PREQ
			HOURS PER WEEK				
TAY610	Fish Technology and Product Quality Assessment	C	3	2	5	6.5	TAY230
TAY620	Fish Products Health Assessment	C	2	2	4	5	—
TAY631	Water Pollution and Toxicity	CE	3	2	5	6	—
TAY632	Aquaculture Engineering and Marine Technology						TAY450
TAY641	Advanced Biostatistics	CE	3	2	5	6	—
TAY642	Pathology and Epidemiology						
TAY651	Fisheries Legislation- Professional Ethics	CE	2	—	2	3	—
TAY652	Protected Aquatic Organisms and their Enrichment						
Total			14	10	24	30	

7th semester

CODE	COURSE	C/CE	LECT	LAB	TOTAL	ECTS CREDITS	PREQ
			HOURS PER WEEK				
TAY711	Biological Aquaculture Management	CE	1	3	4	4	—
TAY712	Applications of Programming Packages on Computers						
TAY721	Fish Farms Construction	CE	1	3	4	4	—
TAY722	Water Quality Control						
TAY731	Specific and Modern Culture of Aquatic Organisms	CE	2	2	4	5	—
TAY732	Navigational and Meteorological Principles						
TAY741	Aquacultures Viability	CE	2	—	2	4	—
TAY742	Safety in the Working Environment						
TAY750	Graduates' Seminar	C	2	—	2	7	—
TAY760	Waterlands Management	C	3	2	5	6	—
Total			13	10	23	30	

8th semester

CODE	COURSE	C/CE	LECT	LAB	TOTAL PERIOD	ECTS CREDITS
TAY810	Graduate Project	C	—	—	6 months	20
TAY820	Industrial Placement Training Period	C	—	—	6 months	10
Total						30

C : Compulsory
CE : Compulsory Elective
LECT : Lecture

LAB : Laboratory
ECTS : European Credit Transfer System
PREQ : Prerequisite

DEPARTMENT OF STANDARDIZATION & TRANSPORTATION OF PRODUCTS —LOGISTICS—

(Katerini)

Graduates of this Department can be employed:

- in Industrial and Commercial enterprises that produce and transport their own products or products of other companies.
- in road, sea or air-transportation companies.
- in public sector as in hospitals, the armed forces and other public services.
- in tourist agencies or companies delivering printed material or parcels.

PROGRAM OF STUDIES

1st semester

CODE	COURSE	C/CE	LECT	LAB	TOTAL	ECTS CREDITS	PREQ
			HOURS PER WEEK				
ΤΔΠ110	Process of Vegetable Products	C	3	3	6	6	—
ΤΔΠ120	Process of Animal Products	C	3	3	6	6	—
ΤΔΠ130	Structure of Material I	C	4	—	4	6	—
ΤΔΠ140	Work Psychology	C	3	—	3	4	—
ΤΔΠ150	Introduction to Economics	C	3	—	3	4	—
ΤΔΠ160	Informatics I	C	2	2	4	4	—
Total			18	8	26	30	

OPTIONAL COURSES FOR THIS SEMESTER: Foreign Language I

2nd semester

CODE	COURSE	C/CE	LECT	LAB	TOTAL	ECTS CREDITS	PREQ
			HOURS PER WEEK				
ΤΔΠ210	Logistics I- International Transportation	C	4	—	4	6	—
ΤΔΠ220	Structure of Material II	C	4	—	4	5	—
ΤΔΠ230	Human Resources Management	C	3	—	3	5	—
ΤΔΠ240	Procedures of Converting Products	C	3	—	3	5	—
ΤΔΠ250	Methodology of Research and Formation of a Scientific Project	C	4	—	4	5	—
ΤΔΠ260	Informatics II	C	2	2	4	4	—
Total			11	12	23	30	

OPTIONAL COURSES FOR THIS SEMESTER: Foreign Language II

3rd semester

CODE	COURSE	C/CE	LECT	LAB	TOTAL	ECTS CREDITS	PREQ
			HOURS PER WEEK				
TΔΠ310	Logistics II- Domestic Transportation	C	4	—	4	6	—
TΔΠ320	Packing Technology	C	4	—	4	5	—
TΔΠ330	Introduction to Law/ International-European	C	3	—	3	6	—
TΔΠ340	Business Administration	C	4	—	4	6	—
TΔΠ350	Principles of Accounting	C	3	—	4	4	—
TΔΠ360	Applications of Commercial Management with Computers	C	1	3	4	4	—
Total			19	3	22	30	

4th semester

CODE	COURSE	C/CE	LECT	LAB	TOTAL	ECTS CREDITS	PREQ
			HOURS PER WEEK				
TΔΠ410	Logistics III- Storing	C	4	—	4	6	—
TΔΠ420	Principles of Marketing	C	4	—	4	6	—
TΔΠ430	Cost Accounting-Managerial Accounting	C	4	—	4	6	—
TΔΠ440	Project Management	C	2	2	4	3	—
TΔΠ450	Statistics-Quantitative Data Analysis	C	2	1	3	4	—
TΔΠ460	Information Systems of Enterprise Resources (Logistics Module/ERP)	C	—	4	4	5	—
Total			22	4	26	30	

5th semester

CODE	COURSE	C/CE	LECT	LAB	TOTAL	ECTS CREDITS	PREQ
			HOURS PER WEEK				
TΔΠ510	Logistics IV- Special Storing	C	4	—	4	6	—
TΔΠ520	Quality Management I	C	4	—	4	5	—
TΔΠ530	English Language Terminology	C	4	—	4	6	—
TΔΠ540	E-commerce	C	3	I	4	6	—
TΔΠ550	Insurance Systems- Transportation Insurance	C	3	—	3	3	—
TΔΠ560	Project	C	4	—	4	4	—
Total			22	I	23	30	

6th semester

CODE	COURSE	C/CE	LECT	LAB	TOTAL	ECTS CREDITS	PREQ
			HOURS PER WEEK				
TΔΠ610	Supply Chain Management	C	4	—	4	6	—
TΔΠ620	Enterprise Strategy	C	4	—	4	6	—
TΔΠ630	Quality Management II	C	4	—	4	5	—
TΔΠ640	Geographical Information Systems (GIS)	C	4	—	4	5	—
TΔΠ651	Information of Innovations and Organizational Change	CE	4	—	4	4	—
TΔΠ652	International Trade						
Total			20	—	20	30	

7th semester

CODE	COURSE	C/CE	LECT	LAB	TOTAL	ECTS CREDITS	PREQ
			HOURS PER WEEK				
TΔΠ710	Graduate's Seminar	C	4	—	4	6	—
TΔΠ720	Standardization of Means of Transportation/Distribution	C	4	—	4	6	—
TΔΠ730	Customers Relations Management	C	2	2	4	6	—
TΔΠ741	Distribution of Products and Public Health	CE	3	—	3	4	—
TΔΠ742	Production Management						
TΔΠ751	Enviroment Management Systems						
TΔΠ752	Logistics Chain of Services Management						
Total			16	2	18	26	

OPTIONAL COURSES FOR THIS SEMESTER: Teaching

8th semester

CODE	COURSE	C/CE	LECT	LAB	TOTAL PERIOD	ECTS CREDITS
TΔΠ810	Graduate Project	C	—	—	6 months	20
TΔΠ820	Industrial Placement Training Period	C	—	—	6 months	10
Total						30

C : Compulsory
CE : Compulsory Elective
LECT : Lecture

LAB : Laboratory
ECTS : European Credit Transfer System
PREQ : Prerequisite